



inVerde®

inVerde®

CATALOGUE

2024

HOME, GARDEN AND VEGETABLE GARDEN

Legal Address & Production Site:
Via A.B. Sabin 31 - 20019 Settimo Milanese (MI)
Logistics & Commercial Offices:
Via A.B. Sabin 17/19 - 20019 Settimo Milanese (MI)



CATALOGUE 2024



CATALOGUE 2024



INDEX

CATALOGUE 2024 inVerde

- 5 inVerde Ecosystem
- 6 Our certifications
- 8 inVerde Line-up

- 10 **HOME LINE**
- 14 TRAP FOR FOOD MOTHS
- 16 TRAP FOR CLOTHES MOTHS
- 18 TRAP FOR COCKROACH
- 20 CORNER TRAP FOR COCKROACH
- 22 TRAP FOR SILVERFISH
- 24 TRAP FOR BED BUGS
- 26 CORNER FLY TRAP
- 28 FLY BLADE TRAP
- 30 FRUIT FLIES LANTERN
- 32 PLANT PARASITES TRAP
- 34 TRAP FOR MOUSE AND CRAWLING INSECT

- 36 **GARDEN AND VEGETABLE GARDEN LINE**
- 40 PHEROMONE CHROMOTROPICS FOR **FRUIT PLANTS**
- 42 PHEROMONE CHROMOTROPICS FOR **CHERRY**
- 44 PHEROMONE CHROMOTROPICS FOR **TOMATO**
- 46 PHEROMONE CHROMOTROPICS FOR **OLIVE TREES**
- 48 PHEROMONE CHROMOTROPICS FOR **VINE**
- 50 PANEL FOR TRAPPING FLIES, WHITEFLIES AND LEAFHOPPERS - GOLDENTRAP®
- 52 PANEL FOR TRAPPING THRIPS - BLUETRAP®
- 54 REPELLENT FOR TIGER MOSQUITO
- 56 REPELLENT FOR ANT

- 58 **BROWN MARMORATED STINK BUG** CYMATRAP® GARDEN
PHEROMONE DISPENSER + ATTRACTANT FOR
- 60 **BROWN MARMORATED STINK BUGS**
- 62 TRAP FOR **POPILLIA JAPONICA** MASS®
- 64 PHEROMONE DISPENSER + FLORAL ATTRACTANT FOR **POPILLIA JAPONICA**
- 65 COLLECTING BAGS FOR **POPILLIA JAPONICA**
- 66 TRAP FOR TOMATO PESTS
IDROTRAP
- 68 TRAP FOR POTATO PESTS
- 70 TRAP FOR VESPIDES - MELATRAP
- 72 ATTRACTIVE FOR WASPS - VESPOKIL
- 74 KIT **MELATRAP + VESPOKIL**

- 76 **RODENT LINE**
- 80 GLUE TRAP **MINI**
- 82 GLUE TRAP **MAXI**
- 84 GLUE TRAP **STOP**
- 86 GLUE TUBE FOR ADHESIVE TRAP
- 88 **CORAL** - BAIT STATION
- 90 **BETA2** - BAIT STATION
- 92 **ROCK BAIT STATION** - BAIT STATION
- 94 REPELLENT MICE AND RATS
- 96 REPELLENT MOLE

- 98 inVerde products
- 100 POS material
- 102 inVerde team

inVerde Ecosystem

inVerde is GEA product range dedicated to domestic and everyday use.

InVerde offers an innovative and green approach to pest control: prevent and use distraction systems instead of poisons and chemical insecticides, without sacrificing professional effectiveness.

✓ **PROFESSIONAL PROTECTION AND PREVENTION WITHOUT INSECTICIDES**

✓ **SAFETY FOR YOU AND YOUR PETS**

✓ **SUSTAINABILITY AND ENVIRONMENTAL AWARENESS OF THE PRODUCTION PROCESS**

Effectiveness and safety at home and outdoors



Against pests in the bedroom, kitchen, pantry, cupboards and all other domestic areas.



Products designed for outdoor areas, against pests in the vegetable garden, garden, balconies and terraces.



A range against rodents for domestic areas, garages, carports, cellars and outdoor cottages.

Our certifications



UNI EN ISO 9001:2015
Quality management systems.

UNI ISO 21001:2018
Management Systems for Organisations
education and training organisations.

ISO 45001:2018
Occupational Safety & Health Management
System at work.

UNI EN ISO 14001:2015
Environmental management systems.



For your HOME, your GARDEN and your VEGETABLE GARDEN

CRAWLING AND FLYING INSECTS LINE

REPELLENT LINE

CHROMOTROPIC LINE

RODENT LINE

GREENSTOP

inVerde Line-up

Non-toxic products. Specially designed for use in:
kitchens, dining rooms, living rooms, bedrooms,
bathrooms, gardens, cellars and attics.
INSECTICIDE-FREE.





A safe home without unwelcome inhabitants

Pests in home can hide in pantries, cupboards, mattresses, bathrooms, kitchens, sofas and curtains. The first defence for home security is to keep these unwelcome inhabitants away by using repellents, deterrents and food attractants. To intervene in the event of an infestation in progress, it is important to use professional and effective products without dangerous poisons, intervening promptly and safely.

Some insects are annoying and hide themselves from view, this is why our ranges also include monitoring systems that allow you to check for the presence or absence of the most insidious insects, such as food moths.

CRAWLING AND FLYING LINE

CRAWLING AND FLYNG INSECT LINE



TRAP FOR
FOOD MOTHS

TRAP FOR
CLOTHES MOTHS

TRAP FOR
COCKROACH

CORNER TRAP FOR
COCKROACH

TRAP FOR
SILVERFISH

TRAP FOR
BED BUGS

CORNER FLY
TRAP

FLY BLADE FLY
TRAP

FRUIT FLIES
LANTERN

PLANT PARASITES
TRAP

TRAP FOR
**MOUSE AND
CRAWLING INSECT**

TRAP FOR FOOD MOTHS

PRE-ACTIVATED CARDBOARD TRAPS WITH A SPECIAL PHEROMONE FOR FOOD MOTHS.



Ephestia kuehniella

Plodia interpunctella

TRAP FOR FOOD MOTHS

- ✓ EASY-TO-USE MONITORING DEVICE
- ✓ WITH SPECIFIC PHEROMONE
- ✓ INSECTICIDE-FREE
- ✓ ATTRACTS ONLY TARGETED INSECTS
- ✓ EFFICACY UP TO 3 MONTHS DOUBLE POSSIBILITY OF USE THANKS TO THE DOUBLE-SIDED ADHESIVE ON THE TRAP:
 - APPLIED TO THE DOOR
 - APPLIED TO THE BASE OF THE SHELF



NON TOXIC

INSECTICIDE FREE

SAFE FOR ANIMALS AND THE ENVIROMENT



TARGETED PESTS

Food moths
(*Ephestia kuehniella*, *Plodia interpunctella*).

WHERE TO USE

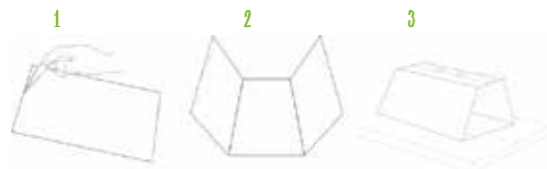
In kitchens, pantries, cupboards, shelves and all places where food is stored.

MONITORING PERIOD

All year round, especially between March and October, when there is an increase in this type of pest.

Jan. Feb. Mar. Apr. May June July Aug. Sep. Oct. Nov. Dec.

USER GUIDE



TRAP DIMENSIONS

Length 157 mm | Thickness 80 mm.



ARTICLE CODE

P-04146DIN

TYPE OF PACKAGING

CARTON BOX

TRAPS PER CASE

2 pcs

CASES FOR DISPLAY

12 pcs

DISPLAY FOR PALLET

216

PRODUCT EAN CODE

8053251600026



TRAP FOR CLOTHES MOTHS

CARDBOARD TRAPS PRE-ACTIVATED WITH SPECIFIC PHEROMONE FOR CLOTHES MOTHS.



Tineola bisselliella



Tinea pellionella

TRAP FOR CLOTHES MOTHS

- ✓ EASY-TO-USE MONITORING DEVICE
- ✓ INSECTICIDE-FREE
- ✓ ATTRACTS ONLY TARGETED INSECTS
- ✓ EFFICACY UP TO 3 MONTHS



NON TOXIC

INSECTICIDE FREE

SAFE FOR ANIMALS AND THE ENVIROMENT



TARGETED PESTS

Cloth moths
(*Tineola bisselliella* e *Tinea pellionella*).

WHERE TO USE

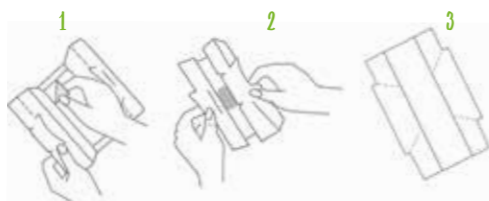
Wardrobes, cupboards, drawers and all places where furs, wool and silk are stored.

MONITORING PERIOD

All year round, especially between March and October, when there is an increase in this type of infestation.

Jan. Feb. Mar. Apr. May June July Aug. Sep. Oct. Nov. Dec.

USER GUIDE



TRAP DIMENSIONS

Length 157 mm | Thickness 80 mm.



ARTICLE CODE

P-04067DIN

TYPE OF PACKAGING

CARTON BOX

TRAPS FOR CASE

2 pcs

CASES FOR DISPLAY

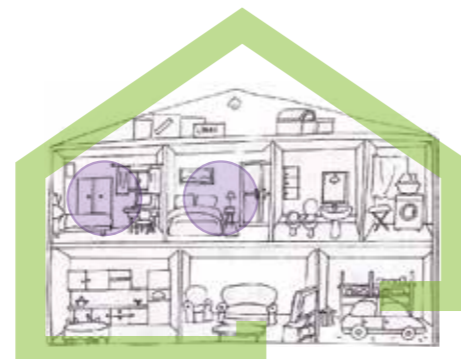
12 pcs

DISPLAY FOR PALLET

216

PRODUCT EAN CODE

8053251600019



TRAP FOR COCKROACH

LICORICE-FLAVOURED STICKY TRAPS FOR MONITORING
COCKROACHES.

TARGETED PESTS

Blattella germanica, *Blatta orientalis*, *Periplaneta americana* and *Supella longipalpa*.

WHERE TO USE

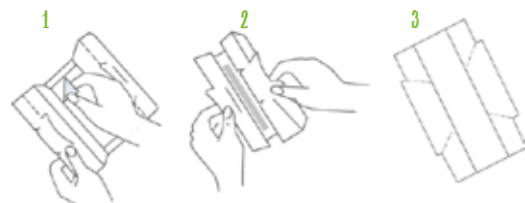
Near: electrical panels, dishwashers, sinks, ovens, doors and perimeters, hot and humid environments in general, and wherever cockroaches are suspected in kitchens, offices and dimly lit areas.

MONITORING PERIOD

All year round, especially between April and October, although in a conditioned environment the insects are always active (although they are seasonal).

Jan. Feb. Mar. Apr. May June July Aug. Sep. Oct. Nov. Dec.

USER GUIDE



TRAP DIMENSIONS

Length 160 mm | Width 80 mm.

ASSEMBLED TRAP DIMENSIONS

Length 135 mm - Width 80 mm - Height 22 mm.



ARTICLE CODE

P-04294DIN

TYPE OF PACKAGING

CARTON BOX

TRAPS FOR CASE

2 pcs

CASES FOR DISPLAY

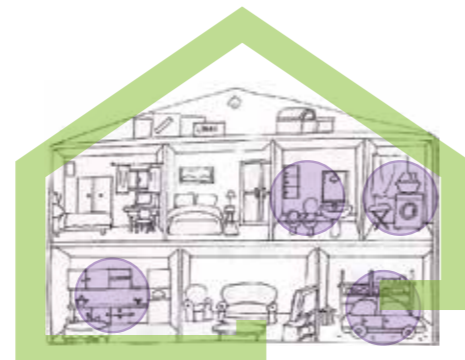
12 pcs

DISPLAY FOR PALLET

216

PRODUCT EAN CODE

8053251600040



Blattella germanica



Blatta orientalis

TRAP FOR COCKROACH

- ✓ EASY-TO-USE MONITORING DEVICE
- ✓ ATTRACTANT GEL ON ADHESIVE SURFACE
- ✓ ATTRACTS ONLY TARGETED INSECTS



NON TOXIC

INSECTICIDE FREE

SAFE FOR ANIMALS AND THE ENVIROMENT



CORNER TRAP FOR COCKROACH

LICORICE-FLAVOURED TRIANGULAR ADHESIVE MONITORING TRAP FOR DETECTING COCKROACHES AND CRAWLING INSECTS. IT IS NON-TOXIC, CONTAINS NO INSECTICIDES AND IS THEREFORE SAFE FOR BOTH ANIMALS AND THE ENVIRONMENT, ATTRACTING ONLY THE TARGET INSECTS.



TARGETED PESTS

Blattella germanica, *Blatta orientalis*, *Periplaneta americana* e *Supella longipalpa*.

WHERE TO USE

Near: electrical panels, dishwashers, sinks, ovens, doors and perimeters, hot and humid environments in general, and wherever cockroaches are suspected in kitchens, offices and dimly lit areas.

MONITORING PERIOD

All year round, especially between April and October, although in a conditioned environment the insects are always active (although they are seasonal).

Jan. Feb. Mar. Apr. May June July Aug. Sep. Oct. Nov. Dec.

USER GUIDE

Place the Corner Trap for Cockroaches in domestic environments, especially kitchens, storages, near electric cables and wires.

TRAP DIMENSIONS

Length 194 mm – Width 135 mm.

ASSEMBLED TRAP DIMENSIONS

Legth 135 mm – Width 80 mm – Height 18 mm.



ARTICLE CODE

P-04029DIN

TYPE OF PACKAGING

CARTON BOX

TRAPS FOR CASE

2 pcs

CASES FOR DISPLAY

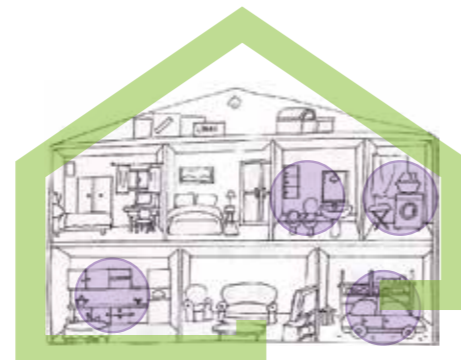
12 pcs

DISPLAY FOR PALLET

108

PRODUCT EAN CODE

8053251600552



Blatella germanica



Blatta orientalis

CORNER TRAP FOR COCKROACH

- ✓ EASY-TO-USE MONITORING DEVICE
- ✓ ATTRACTANT GEL ON ADHESIVE SURFACE
- ✓ ATTRACTS ONLY TARGETED INSECTS



NON TOXIC

INSECTICIDE FREE

SAFE FOR ANIMALS AND THE ENVIROMENT



TRAP FOR SILVERFISH

LICORICE-FLAVOURED GLUE TRAPS FOR SILVERFISH MONITORING.



Lepisma saccharina

TRAP FOR SILVERFISH

- ✓ 4 INSECT ENTRANCES
- ✓ INSECTICIDE-FREE
- ✓ ATTRACTS ONLY TARGETED INSECTS
- ✓ EASY TO USE AND FIX



EASY TO USE

WITH ATTRACTANT GEL ON ADHESIVE SURFACE

NON TOXIC

INSECTICIDE FREE

SAFE FOR ANIMALS AND THE ENVIRONMENT

TARGETED PESTS

Lepisma saccharina.

WHERE TO USE

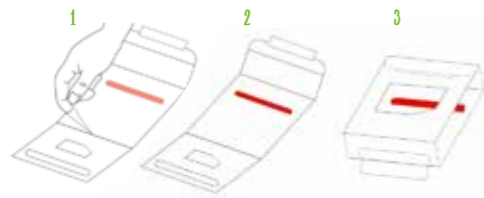
In kitchens, bathrooms, bookcases and near: electrical conduits, dishwashers, sinks, ovens, fan coils, doors and perimeters, hot and humid environments in general, and wherever its presence is suspected.

MONITORING PERIOD

All year round, especially between April and October, although in a conditioned environment insects are always active.

Jan. Feb. Mar. Apr. May June July Aug. Sep. Oct. Nov. Dec.

USER GUIDE



TRAP DIMENSIONS

Length 160 mm | Width 80 mm.

ASSEMBLED TRAP DIMENSIONS

Length 52 mm - Width 80 mm - Height 23 mm.



ARTICLE CODE

P-04114DIN

TYPE OF PACKAGING

CARTON BOX

TRAPS FOR CASE

2 pcs

CASES FOR DISPLAY

12 pcs

DISPLAY FOR PALLET

216

PRODUCT EAN CODE

8053251600033



TRAP FOR BED BUGS

GLUE TRAP TO DETECT THE PRESENCE OF BED BUGS.



Cimex lectularius

TRAP FOR BED BUGS

- ✓ EASY-TO-USE MONITORING DEVICE
- ✓ PARTICULAR SHAPE, WHICH INVITES BUGS TO TAKE SHELTER INSIDE
- ✓ ATTRACTS ONLY TARGETED INSECTS
- ✓ EASY TO USE AND FIX



EASY TO USE

NON TOXIC

INSECTICIDE FREE

SAFE FOR ANIMALS AND THE ENVIROMENT

TARGETED PESTS

Cimex lectularius.

WHERE TO USE

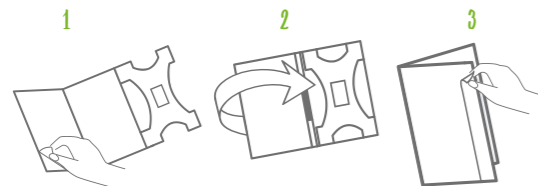
Under sofa cushions, at the foot of the bed, along the footboard or skirting board, behind picture frames, on the headboard, behind curtains.

MONITORING PERIOD

All year round.

Jan. Feb. Mar. Apr. May June July Aug. Sep. Oct. Nov. Dec.

USER GUIDE



TRAP DIMENSIONS

Length 160 mm | Width 85 mm.



ARTICLE CODE	P-04179DIN
TYPE OF PACKAGING	CARTON BOX
TRAPS FOR CASE	2 pcs
CASES FOR DISPLAY	12 pcs
DISPLAY FOR PALLET	216
PRODUCT EAN CODE	8053251600125



CORNER FLY

TRAP

BANANA-FLAVOURED CORNER GLUE TRAP FOR MONITORING FLIES. ITS TRIANGULAR SHAPE ALLOWS PERFECT ADHESION TO THE CORNER OF WINDOWS, THANKS TO THE DOUBLE-SIDED ADHESIVE TAPE ON THE BACK OF THE TRAP.

TARGETED PESTS

Musca domestica.

WHERE TO USE

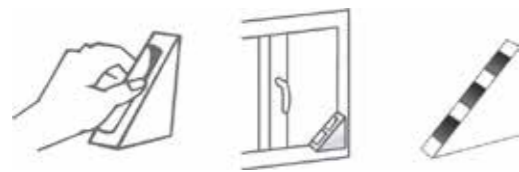
Windows.

MONITORING PERIOD

All year round, especially between April and October, when there is an increase in this type of infestation.

Jan. Feb. Mar. Apr. May June July Aug. Sep. Oct. Nov. Dec.

USER GUIDE



TRAP DIMENSIONS

Length 100 mm | Width 100 mm - Height 20 mm.



ARTICLE CODE

P-04030DIN

TYPE OF PACKAGING

CARTON BOX

TRAPS FOR CASE

2 pcs

CASES FOR DISPLAY

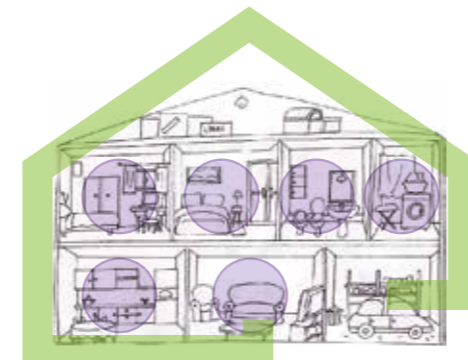
12 pcs

DISPLAY FOR PALLET

108

PRODUCT EAN CODE

8053251600101



Musca domestica

CORNER FLY

TRAP

- ✓ EASY TO USE AND FIX THANKS TO THE DOUBLE-SIDED ADHESIVE TAPE
- ✓ CATCS WELL CONCEALED INSIDE THE SPECIAL SHAPE
- ✓ ONLY ATTRACTS TARGET INSECTS THANKS TO THE FRUITY AROMA RELEASED



READY TO USE

EASY TO USE

NON TOXIC

INSECTICIDE FREE

SAFE FOR ANIMALS AND THE ENVIROMENT



FLY BLADE

TRAP

WINE-FLAVOURED GLUE TRAP FOR FLIES AND FRUIT FLIES. ITS SHAPE ALLOWS PERFECT ADHESION TO THE WINDOW, THANKS ALSO TO THE DOUBLE-SIDED ADHESIVE TAPE POSITIONED ALONG THE ENTIRE ADHESIVE SIDE OF THE TRAP.



Musca domestica

FLY BLADE FLY TRAP

- ✓ EASY TO USE AND FIX THANKS TO THE DOUBLE-SIDED ADHESIVE TAPE
- ✓ INSECTICIDE-FREE
- ✓ ATTRACTS ONLY TARGET INSECTS THANKS TO THE WINE AROMA RELEASED



NON TOXIC

INSECTICIDE FREE

SAFE FOR ANIMALS AND THE ENVIROMENT

TARGETED PESTS

Musca domestica.

WHERE TO USE

Windows.

MONITORING PERIOD

All year round, especially between April and October, when there is an increase in this type of infestation.

Jan. Feb. Mar. Apr. May June July Aug. Sep. Oct. Nov. Dec.

USER GUIDE



TRAP DIMENSIONS

Length 140 mm | Width 80 mm.



ARTICLE CODE

P-04057DIN

TYPE OF PACKAGING

CARTON BOX

TRAPS FOR CASE

3 pcs

CASES FOR DISPLAY

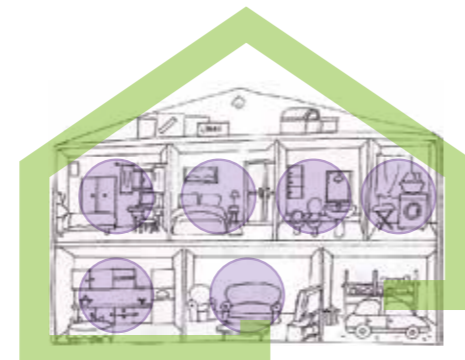
12 pcs

DISPLAY FOR PALLET

216

PRODUCT EAN CODE

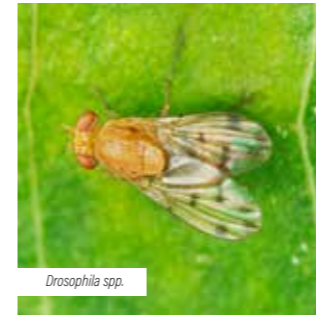
8053251600118



FRUIT FLIES

LANTERN

A MONITORING DEVICE DEVELOPED FOR THE FRUIT FLY, CONSISTING OF A FOLDED GLUE TRAP WITH A BOTTLE CONTAINING A SPECIFIC LIQUID ATTRACTANT INSIDE.



Drosophila spp.

FRUIT FLIES LANTERN

- ✓ DOUBLE CAPTURE SYSTEM BOTH INSIDE THE BOTTLE AND ON THE ADHESIVE SURFACE OF THE TRAP
- ✓ ATTRACTS ONLY THE TARGETED INSECTS INSECTICIDE
- ✓ INSECTICIDE-FREE



TARGETED PESTS

Drosophila spp.

WHERE TO USE

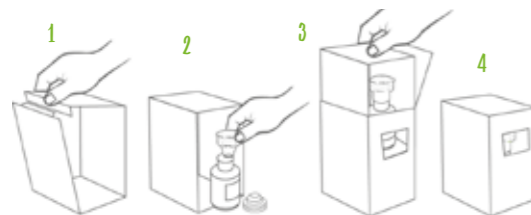
For indoor use near places where fruit flies are present, e.g: fruit baskets, vinegar bottles, dispensers of sugary drinks, wine or beer, etc.

MONITORING PERIOD

All year round, especially between April and October, when an increase in the presence of this target insect can be recorded.

Jan. Feb. Mar. Apr. May June July Aug. Sep. Oct. Nov. Dec.

USER GUIDE



TRAP DIMENSIONS

Length: 396.5 mm | Height: 75 mm.

ASSEMBLED TRAP DIMENSIONS

Length: 396.5 mm | Height: 75 mm
Thickness: 75 mm.



ARTICLE CODE

P-04093DIN

TYPE OF PACKAGING

CARTON BOX

TRAPS FOR CASE

1 pc

CASES FOR DISPLAY

6 pcs

DISPLAY FOR PALLET

300

PRODUCT EAN CODE

8053251600217



NON TOXIC

INSECTICIDE FREE

SAFE FOR ANIMALS AND THE ENVIROMENT



PLANT PARASITES TRAP

CHROMOTROPIC GLUE-BASED MONITORING DEVICE FOR DETECTING FLIES, MIDGES AND PLANT PESTS. ITS SHAPE RESEMBLES THAT OF A FLOWER WITH A TIP FOR INSERTING IT IN ANY POT.

TARGETED PESTS

Flies, drosophila, scarf flies, whiteflies, winged aphids, thrips, agromyzids and other pests.

WHERE TO USE

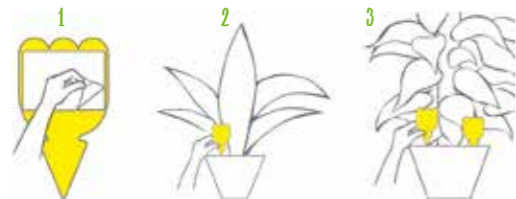
Only in indoor areas, used in pots of ornamental plants.

MONITORING PERIOD

All year round, especially between April and October, when there is an increase in this type of infestation.

Jan. Feb. Mar. Apr. May June July Aug. Sep. Oct. Nov. Dec.

USER GUIDE



TRAP DIMENSIONS

Length: 160 mm | Width: 80 mm.



ARTICLE CODE

P-04254DIN

TYPE OF PACKAGING

PLASTIC

TRAPS FOR CASE

2 pcs

CASES FOR DISPLAY

12 pcs

DISPLAY FOR PALLET

216

PRODUCT EAN CODE

8053251600132



Mosca bianca

PLANT PARASITES TRAP

- ✓ ATTRACTS ONLY THE TARGETED INSECTS
- ✓ INSECTS, ATTRACTED BY THE YELLOW COLOUR GET CAUGHT IN THE TRAP



NON TOXIC

INSECTICIDE FREE

SAFE FOR ANIMALS AND THE ENVIRONMENT



TRAP FOR MOUSE AND CRAWLING INSECT

HAZELNUT-FLAVOURED GLUE TRAP FOR DETECTING SMALL RODENTS AND CRAWLING INSECTS.



Mus musculus musculus



Blatta orientalis

TRAP FOR MOUSE AND CRAWLING INSECT

- ✓ EASY-TO-USE MONITORING DEVICE
- ✓ INSECTICIDE-FREE
- ✓ PROTECTED CATCHES



EASY TO USE

NON TOXIC

INSECTICIDE FREE

SAFE FOR ANIMALS AND THE ENVIROMENT

TARGETED PESTS

Mus musculus musculus, *Mus musculus domesticus*, crawling insects.

WHERE TO USE

Near:

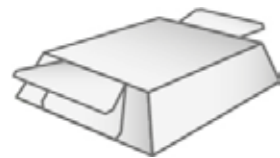
- ducts and electrical panels, dishwashers, doors and cracks, lofts, cellars, garages;
- along the perimeters of rooms and along the rodent's habitual routes, which can be identified by detecting droppings, hair, burrows, greasy traces, footprints;

MONITORING PERIOD

All year round, especially between October and April, when there are peaks of infestation intensity due to lower outdoor temperatures.

Jan. Feb. Mar. Apr. May June July Aug. Sep. Oct. Nov. Dec.

USER GUIDE



TRAP DIMENSIONS

Length: 126 mm | Thickness: 122 mm | Height: 12.5 mm



ARTICLE CODE

P-02148DIN

TYPE OF PACKAGING

CARTONE

TRAPS FOR CASE

1 pc

CASES FOR DISPLAY

12 pz

DISPLAY FOR PALLET

165

PRODUCT EAN CODE

8053251600071





CHROMOTROPICS

Protect your garden and vegetable garden

Taking care of your house, includes paying proper attention to green areas such as gardens, vegetable gardens, balconies and terraces. Insects and rodents can be dangerous for people and pets health and safety can be guaranteed with preventive actions.

Many insects such as wasps, hornets and larvae represent a serious risk and it's very important to avoid formation of nests and hives.

Effective prevention means making outdoor spaces safe and, at same time, protecting access to your house.

In case of infestation we can put at your disposal an entire range of targeted products, with specific features for any type of ambient and insect and guaranteed effectiveness.

Last, but not least, all our traps are Animal Welfare sensitive and are designed not to affect other animal species.

REPELLENTS

CRAWLING AND FLYING INSECTS LINE



CHROMOTROPICS LINE

PHEROMONE CHROMOTROPICS FOR
FRUIT PLANTS

PHEROMONE CHROMOTROPICS FOR
CHERRY

PHEROMONE CHROMOTROPICS FOR
TOMATO

PHEROMONE CHROMOTROPICS FOR
OLIVE TREES

PHEROMONE CHROMOTROPICS FOR
GRAPE VINE

PANEL FOR TRAPPING
**FLIES, WHITEFLIES
AND LEAFHOPPERS**
GOLDENTRAP®

PANEL FOR TRAPPING
THRIPS
BLUTRAP®

REPELLENT LINE

REPELLENT FOR
TIGER MOSQUITO

REPELLENT FOR
ANT

CRAWLING AND FLYING INSECTS LINE

**BROWN MARMORATED
STINK BUG** TRAP
CYMATRAP® GARDEN

TRAP FOR
POPILLIA JAPONICA
MASS®

TRAP FOR
TOMATO PESTS
IDROTRAP

TRAP FOR
POTATO PESTS
YATLORF

TRAP FOR
VESPIDS
MELATRAP

ATTRACTIVE FOR
WASPS
VESPOKIL

KIT
MELATRAP+VESPOKIL



PEROMONE CHROMOTROPICS FOR FRUIT PLANTS

THE PHEROMONE CHROMOTROPIC PHEROMONE GLUE TRAP FOR FRUIT PLANTS IS AN EASY-TO-USE PHEROMONE GLUE TRAP. THANKS TO THE CHROMOTROPIC ACTION PERFORMED BY THE YELLOW COLOUR OF THE TRAP, AND THE ATTRACTIVE ACTION PROVIDED BY THE SPECIFIC PHEROMONES USED AND RELEASED BY THE DROPLET IN THE CENTRE OF THE ADHESIVE SURFACE, THE TARGET INSECTS ORIENT THEMSELVES TOWARDS THE DEVICE AND BECOME ENTANGLED IN IT.



Cydia pomonella



Cydia molesta

PEROMONE CHROMOTROPICS FOR FRUIT PLANTS

- ✓ RESISTANT TO BAD WEATHER
- ✓ DOUBLE ATTRACTIVE ACTION: CHROMOTROPIC AND PHEROMONIC
- ✓ STRAP BUILT IN THE TRAP



TARGETED PESTS

Pheromone-based glue trap suitable for monitoring Codling moth (*Cydia pomonella*) and the oriental fruit moth or peach moth (*Cydia molesta*).

WHERE TO USE

Used on fruit plants.

MONITORING PERIOD

All year round, especially between April and July.

Jan. Feb. Mar. Apr. May June July Aug. Sep. Oct. Nov. Dec.

USER GUIDE

Hang the trap on a branch of fruit plants such as: apple tree, peach tree, plum tree, apricot tree, almond tree, pear tree and quince tree, at a height from the ground of about 1.70 metres, using the knurled strap on the side of the trap, partially detaching it and inserting it into the hole. Place 1 trap/plant. 1 trap covers half a hectare maximum. Use 2-3 traps/ hectare.



ARTICLE CODE

P-04262DIN

TYPE OF PACKAGING

CARTON BOX

FLOW PACK TRAPS

3 pcs

PACKAGES FOR DISPLAY

12 pcs

DISPLAY FOR PALLET

476

PRODUCT EAN CODE

8053251600293

ODORLESS

EASY TO USE

NON TOXIC

INSECTICIDE FREE

SAFE FOR ANIMALS AND THE ENVIROMENT

PHEROMONE CHROMOTROPICS FOR **CHERRY**

THE CHROMOTROPIC PHEROMONE TRAP FOR CHERRY TREES IS AN EASY-TO-USE PHEROMONE GLUE TRAP. THANKS TO THE CHROMOTROPIC ACTION CARRIED OUT BY THE TRAP'S YELLOW AND RED COLOURS, AND THE ATTRACTIVE ACTION PROVIDED BY THE TWO SPECIFIC PHEROMONES USED AND RELEASED BY THE DROPLET IN THE CENTRE OF THE ADHESIVE SURFACE, THE TARGET INSECT IS ORIENTED TOWARDS THE DEVICE AND BECOMES ENTANGLED IN IT.



TARGETED PESTS

Pheromone-based glue trap, suitable for cherry fly monitoring (*Rhagoletis cerasi*).

WHERE TO USE

Used on cherry trees.

MONITORING PERIOD

All year round, especially between March and June.

Jan. Feb. **Mar.** Apr. May June July Aug. Sep. Oct. Nov. Dec.

USER GUIDE

Hang the trap on a branch of the cherry tree facing south/south-west, preferably the middle to upper part of the foliage, and at a height from the ground of approx. 1.70 metres, using the knurled strap on the side of the trap, partially detaching it and inserting it into the hole.

Place 1 trap/plant. 1 trap covers half a hectare maximum.

Use 2-3 traps/hectare.



ARTICLE CODE

P-04264DIN

TYPE OF PACKAGING

CARTON

FLOW PACK TRAPS

3 pcs

PACKAGES FOR DISPLAY

12 pcs

DISPLAY FOR PALLET

476

PRODUCT EAN CODE

8053251600316



Rhagoletis cerasi

PHEROMONE CHROMOTROPICS FOR **CHERRY**

- ✓ RESISTANT TO BAD WEATHER
- ✓ DOUBLE ATTRACTIVE ACTION: CHROMOTROPIC AND PHEROMONIC
- ✓ STRAP BUILT IN THE TRAP



ODORLESS

EASY TO USE

NON TOXIC

INSECTICIDE FREE

SAFE FOR ANIMALS AND THE ENVIROMENT

PHEROMONE CHROMOTROPICS FOR TOMATO

THE CHROMOTROPIC PHEROMONE GLUE TRAP FOR TOMATO PLANTS IS AN EASY-TO-USE PHEROMONE GLUE TRAP. THANKS TO THE CHROMOTROPIC ACTION CARRIED OUT BY THE BLACK COLOUR OF THE TRAP, AND THE ATTRACTIVE ACTION PROVIDED BY THE SPECIFIC PHEROMONE USED AND RELEASED FROM THE DROP IN THE CENTRE OF THE ADHESIVE SURFACE, THE TARGET INSECT IS ORIENTED TOWARDS THE DEVICE AND GETS CAUGHT IN IT.



TARGETED PESTS

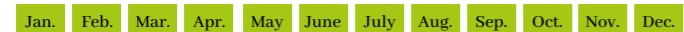
Suitable for monitoring the tomato moth (*Tuta absoluta*).

WHERE TO USE

Used on tomato plants.

MONITORING PERIOD

All year round.



USER GUIDE

Hang the trap on the tomato plant, at a height from the ground of approximately 0.30-1.20 metres, depending on the development of the plants, using the knurled strap on the side of the trap, partially detaching it and inserting it into the hole. Place 9-10 traps/hectare.



ARTICLE CODE	P-04263DIN
TYPE OF PAKAGING	CARTON BOX
FLOW PACK FOR TRAPS	3 pcs
PACKAGES FOR DISPLAY	12 pcs
DISPLAY FOR PALLET	476
PRODUCT EAN CODE	8053251600309



Rhagoletis cerasi

PHEROMONE CHROMOTROPICS FOR TOMATO

- ✓ RESISTANT TO BAD WEATHER
- ✓ DOUBLE ATTRACTIVE ACTION: CHROMOTROPIC AND PHEROMONIC
- ✓ STRAP BUILT IN THE TRAP



ODORLESS

EASY TO USE

NON TOXIC

INSECTICIDE FREE

SAFE FOR ANIMALS AND THE ENVIROMENT



PHEROMONE CHROMOTROPICS FOR OLIVE TREES

THE CHROMOTROPIC PHEROMONE GLUE TRAP FOR OLIVE TREES IS AN EASY-TO-USE PHEROMONE GLUE TRAP. THANKS TO THE CHROMOTROPIC ACTION CARRIED OUT BY THE TRAP'S YELLOW AND RED COLOURS, AND THE ATTRACTIVE ACTION PROVIDED BY THE TWO SPECIFIC PHEROMONES USED AND RELEASED BY THE DROPLET IN THE CENTRE OF THE ADHESIVE SURFACE, THE TARGET INSECT IS ORIENTED TOWARDS THE DEVICE AND BECOMES ENTANGLED IN IT.



Bactrocera oleae



Prays oleae

PHEROMONE CHROMOTROPICS FOR OLIVE TREES

- ✓ RESISTANT TO BAD WEATHER
- ✓ DOUBLE ATTRACTIVE ACTION: CHROMOTROPIC AND PHEROMONIC
- ✓ STRAP BUILT IN THE TRAP



TARGETED PESTS

Suitable for monitoring olive fly (*Bactrocera oleae*) and olive moth (*Prays oleae*).

WHERE TO USE

Used on olive plants.

MONITORING PERIOD

All year round, especially between April and November.

Jan. Feb. Mar. **Apr.** May June July Aug. Sep. Oct. Nov. Dec.

USER GUIDE

Hang the trap on a branch of the olive tree (preferably the medium-high part of the foliage), using the knurled band on the side of the trap, partially detaching it and inserting it into the hole as shown in the drawing. Place 1 trap/plant.

1 trap covers half a hectare maximum.

Use 2-3 traps/ hectare.



ARTICLE CODE

P-04261DIN

TYPE OF PAKAGING

CARTON BOX

FLOW PACK FOR TRAPS

3 pcs

PACKAGES FOR DISPLAY

12 pcs

DISPLAY FOR PALLET

476

PRODUCT EAN CODE

8053251600286



GARDEN AND VEGETABLE GARDEN

ODORLESS

EASY TO USE

NON TOXIC

INSECTICIDE FREE

SAFE FOR ANIMALS AND THE ENVIROMENT

PHEROMONE CHROMOTROPICS FOR GRAPE VINE

THE CHROMOTROPIC PHEROMONE GLUE TRAP FOR VINES IS AN EASY-TO-USE PHEROMONE GLUE TRAP. THANKS TO THE CHROMOTROPIC ACTION CARRIED OUT BY THE YELLOW COLOUR OF THE TRAP, AND THE ATTRACTIVE ACTION PROVIDED BY THE SPECIFIC PHEROMONES USED AND RELEASED BY THE DROP IN THE CENTRE OF THE ADHESIVE SURFACE, THE TARGET INSECT IS ORIENTED TOWARDS THE DEVICE AND GETS CAUGHT IN IT.

TARGETED PESTS

Suitable for monitoring vine moth (*Eupoecilia ambiguella*) and European grapevine moth or European grape wormvine moth (*Lobesia botrana*).

WHERE TO USE

Used on vine plants.

MONITORING PERIOD

All year round, especially between April and October.

Jan. Feb. Mar. Apr. May June July Aug. Sep. Oct. Nov. Dec.

USER GUIDE

Hang the trap on the plant, using the knurled strap on the side of the trap, partially detaching it and inserting it into the hole. It is recommended not to place the trap near foliage.

Place 1 trap/plant.

1 trap covers half a hectare maximum.

Use 2-3 traps/ hectare.



ARTICLE CODE

P-04265DIN

TYPE OF PAKAGING

CARTON BOX

FLOW PACK FOR TRAPS

3 pcs

PACKAGES FOR DISPLAY

12 pcs

DISPLAY FOR PALLET

476

PRODUCT EAN CODE

8053251600323



Eupoecilia ambiguella



Lobesia botrana

PHEROMONE CHROMOTROPICS FOR GRAPE VINE

- ✓ RESISTANT TO BAD WEATHER
- ✓ DOUBLE ATTRACTIVE ACTION: CHROMOTROPIC AND PHEROMONIC
- ✓ STRAP BUILT IN THE TRAP



ODORLESS

EASY TO USE

NON TOXIC

INSECTICIDE FREE

SAFE FOR ANIMALS AND THE ENVIROMENT



PANEL FOR TRAPPING
**FLIES, WHITEFLIES
 AND LEAFHOPPERS**
 GOLDENTRAP®



YELLOW ADHESIVE CHROMOTROPIC MONITORING TRAP, USED TO DETECT THE PRESENCE OF INSECTS, ESPECIALLY FOR CATCHING LEAFHOPPERS, FLIES AND MIDGES. EQUIPPED WITH TWO LACES PER PANEL, THE TRAP IS READY FOR USE.

TARGETED PESTS

Flies, whiteflies and leafhoppers

WHERE TO USE

External environments, gardens, orchards and vegetable gardens.

MONITORING PERIOD

All year round, especially between March and October

Jan. Feb. Mar. Apr. May June July Aug. Sep. Oct. Nov. Dec.

USER GUIDE

Remove the two protective films and place the trap on support structures, using the provided ties to secure it firmly.

PANEL SIZE

Height 25,5 cm – Widht 16 cm



ARTICLE CODE

P-25017GDIN

TYPE OF PAKAGING

CARTON BOX

FLOW PACK FOR TRAPS

10 pcs

PACKAGES FOR DISPLAY

10 pcs

DISPLAY FOR PALLET

104

PRODUCT EAN CODE

8053251600460



Scaphoideus titanus - CICALINE

PANEL FOR TRAPPING
**FLIES, WHITEFLIES AND
 LOAFHOPPERS**
 GOLDENTRAP®

✓ RESISTANT TO BAD WEATHER

✓ CHROMOTROPIC ATTRACTIVE ACTION



ODORLESS

EASY TO USE

READY TO USE

NON TOXIC

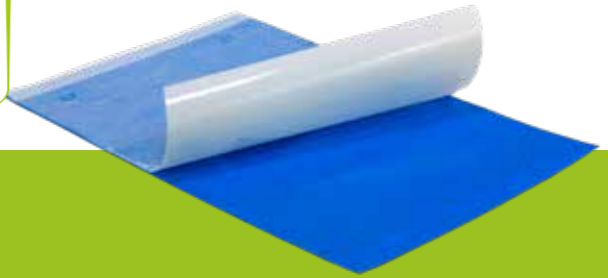
INSECTICIDE FREE

SAFE FOR ANIMALS AND THE ENVIROMENT

PANEL FOR TRAPPING

THRIPS

BLUTRAP®



BLUE ADHESIVE CHROMOTROPIC MONITORING TRAP TO DETECT THE PRESENCE OF THRIPS. EQUIPPED WITH TWO LACES PER PANEL, THE TRAP IS READY FOR USE.

TARGETED PESTS*Thrips***WHERE TO USE**

Use in garden and domestic vegetable gardens.

MONITORING PERIOD

All year round especially between March and October.

Jan. Feb. Mar. Apr. May June July Aug. Sep. Oct. Nov. Dec.

USER GUIDE

Place the traps by removing the protective films and hang the panel with the ties provided. Holes are present to facilitate the placing. Hang at the height of the flower stages or on top of the foliage.

PANEL SIZE

Height 25,5 cm – Width 16 cm

**ARTICLE CODE**

P-25017BDIN

TYPE OF PAKAGING

CARTON BOX

FLOW PACK FOR TRAPS

10 pcs

PACKAGES FOR DISPLAY

50 pcs

DISPLAY FOR PALLET

-

PRODUCT EAN CODE

8053251600477



PANEL FOR TRAPPING

THRIPS
BLUTRAP®

- ✓ RESISTANT TO BAD WEATHER
- ✓ CHROMOTROPIC ATTRACTIVE ACTION



ODORLESS

EASY TO USE

READY TO USE

NON TOXIC

INSECTICIDE FREE

SAFE FOR ANIMALS AND THE ENVIROMENT



REPELLENT FOR TIGER MOSQUITO



THE PRODUCT, IN A READY-TO-USE AQUEOUS SOLUTION CONTAINING GERANIOL, A PLANT-DERIVED ACTIVE INGREDIENT, HAS REPELLENT ACTIVITY AGAINST THE TIGER MOSQUITO.

**NO FLYING
INSECTS**



TARGETED PESTS

Tiger mosquito.

WHERE TO USE

It can be used in the following fields of application:

- Housing areas;
- public places and community venues;
- holiday resorts: hotels, campsites, farmhouses, hostels, etc.
- in productive areas;
- in composting facilities;
- in transport vehicles;
- in port and airport areas, means of transport and railway stations.
- in green areas: such as hedges, gardens, tree-lined avenues for tiger mosquito control.

MONITORING PERIOD

All year round, especially between March and September.

Jan. Feb. Mar. Apr. May June July Aug. Sep. Oct. Nov. Dec.

INSTRUCTION FOR USE

It should be sprayed from a distance of about 30 cm on surfaces such as windowsills, edges, door frames, cracks, outdoor curtains, green areas or in general in places where mosquitoes can settle.



ARTICLE CODE
P-09066IN

TYPE OF PACKAGING
500ml BOTTLE

BOTTLES FOR CARTON
12 pcs

BOXES FOR PALLET
84

PRODUCT EAN CODE
8053251600361

MEDICAL SURGICAL DEVICE
Ministry of Health Registration No. 20633



Zanzara tigre

REPELLENT FOR TIGER MOSQUITO

- ✓ WITH PLANT-DERIVED GERANIOL ACTIVE INGREDIENT
- ✓ FOR ENVIRONMENTAL TREATMENTS
- ✓ NO GAS SPRAY
- ✓ PLEASANTLY SCENTED
- ✓ FOR PROFESSIONAL AND NON-PROFESSIONAL USE



NON TOXIC

INSECTICIDE FREE

SAFE FOR ANIMALS AND THE ENVIRONMENT

REPELLENT FOR
ANT



THE PRODUCT, IN A READY-TO-USE AQUEOUS SOLUTION CONTAINING GERANIOL, A PLANT-DERIVED ACTIVE INGREDIENT, HAS REPELLENT ACTIVITY AGAINST ANTS.

NO FLYING INSECTS



TARGETED PESTS

Ant.

WHERE TO USE

It can be used in the following fields of application:

- Housing areas;
- public places and community venues;
- holiday resorts: hotels, campsites, farmhouses, hostels, etc.
- in productive areas;
- in composting facilities;
- in transport vehicles;
- in port and airport areas, means of transport and railway stations.
- in green areas: such as hedges, gardens, tree-lined avenues for tiger mosquito control.

MONITORING PERIOD

All year round.

Jan. Feb. Mar. Apr. May June July Aug. Sep. Oct. Nov. Dec.

USER GUIDE

It should be sprayed from a distance of approximately 30 cm on surfaces such as windowsills, skirting boards, edges, jambs, cracks, under sofas, carpets or generally in places where ants pass.



ARTICLE CODE
P-09068IN

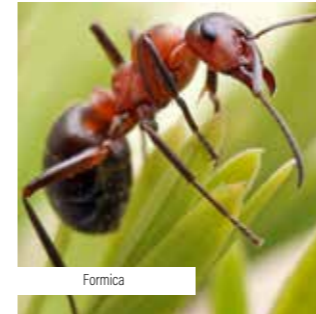
TYPE OF PACKAGING
500ml BOTTLE

BOTTLES FOR CARTON
12 pcs

BOXES FOR PALLET
84

PRODUCT EAN CODE
8053251600347

MEDICAL SURGICAL DEVICE
Ministry of Health Registration No. 20633



Formica

REPELLENT FOR
ANT

- ✓ WITH PLANT-DERIVED GERANIOL ACTIVE INGREDIENT
- ✓ FOR ENVIRONMENTAL TREATMENTS
- ✓ NO GAS SPRAY
- ✓ PLEASANTLY SCENTED
- ✓ FOR PROFESSIONAL AND NON-PROFESSIONAL USE



NON TOXIC

INSECTICIDE FREE

SAFE FOR ANIMALS AND THE ENVIRONMENT



BROWN MARMORATED STINK BUG TRAP

CYMATRAP® GARDEN

PHEROMONE TRAP FOR THE CONTROL AND THE MONITORING OF THE BROWN MARMORATED STINK BUG (*Halyomorpha halys*)
RACCOMENDEDO FOR HOBBY USE.

TARGETED PESTS

Brown Marmorated Stink Bug (*Halyomorpha halys*)

WHERE TO USE

It is the recommended trap for domestic/ hobby use for vegetable gardens, small orchards and gardens.
The particular pyramid shape is designed specifically to effectively capture adults and bedbug nests.

MONITORING PERIOD

All yearlong, especially between March and September

Jan. Feb. Mar. Apr. May June July Aug. Sep. Oct. Nov. Dec.

USER GUIDE

Place Cymatrap® Garden in external environments, gardens, alongside external walls.

TRAP DIMENSIONS

Height 45 cm – Base 16 cm



Halyomorpha halys

BROWN MARMORATED STINK BUG TRAP

- ✓ ATTRACTS ONLY TARGETED INSECTS
- ✓ NON TOXIC
- ✓ INSECTICIDE FREE



NON TOXIC

INSECTICIDE FREE

SAFE FOR ANIMALS AND THE ENVIROMENT



READY TO USE

PHEROMONE DISPENSER
+ ATTRACTANT FOR

BROWN MARMORATED STINK BUGS

CYMATRAP® GARDEN

MONITORING KIT CONSISTING OF A PHEROMONE DISPENSER AND AN ATTRACTANT DISPENSER SPECIFICALLY FOR THE ASIAN BED BUG. THIS COMBINATION ENABLES THE CAPTURE OF INDIVIDUALS OF BOTH SEXES IN GARDENS AND ORCHARDS. IT IS NON-TOXIC, CONTAINS NO INSECTICIDES AND IS THEREFORE SAFE FOR BOTH ANIMALS AND THE ENVIRONMENT.



TARGETED PESTS

Brown Marmorated Stink Bug (*Halyomorpha halys*)

WHERE TO USE

Use in domestic environments such as small orchards and vegetable gardens.

MONITORING PERIOD

All yearlong, especially between March and September

Jan. Feb. Mar. Apr. May June July Aug. Sep. Oct. Nov. Dec.

USER GUIDE

Use with Cymatrap® Garden.

USE WITH:

**BROWN MARMORATED STINK BUG
TRAP CYMATRAP® GARDEN**
P-25012CIN



ARTICLE CODE

P-25012CINKIT

TYPE OF PACKAGING

CARTON BOX

DISPENSER PER PACKAGE

2 pcs (pheromone) +
1 pcs (attractant)

CASES FOR CARTON BOX

12 pcs

CARTONI FOR PALLET

200

PRODUCT EAN CODE

8053251600446

NON TOXIC

INSECTICIDE FREE

SAFE FOR ANIMALS AND THE ENVIROMENT

TRAP FOR POPILLIA JAPONICA MASS®

PHEROMONE TRAP FOR MONITORING THE JAPANESE BEETLE (*Popillia japonica*), POLYPHAGOUS INSECT AND PEST OF NUMEROUS FRUIT AND ORNAMENTAL CROPS.



TARGETED PESTS

Japanese beetle (*Popillia japonica*).

WHERE TO USE

The presence of the sex pheromone and the floral attractant makes it possible to capture both sexes.

The neutral colour makes the trap selective towards the Japanese beetle, avoiding attracting pollinating insects.

MONITORING PERIOD

All year round, especially in the months between May and August.

Jan. Feb. Mar. Apr. **May** June July Aug. Sep. Oct. Nov. Dec.

USER GUIDE

Place MASS® trap in external environment, gardens and vegetable gardens, at least 1 meter high and 10 meters from the most affected plants.



ARTICLE CODE

P-04215CIN

TYPE OF PACKAGING

CARTON BOX

TRAPS FOR CASE

1 pc

CASES FOR CARTON BOX

4 pcs

PRODUCT EAN CODE

8053251600392



Popillia japonica

TRAP FOR POPILLIA JAPONICA MASS®

- ✓ ATTRACTS ONLY TARGETED INSECTS
- ✓ NON TOXIC
- ✓ INSECTICIDE FREE



NON TOXIC

INSECTICIDE FREE

SAFE FOR ANIMALS AND THE ENVIROMENT

READY TO USE



PHEROMONE DISPENSER
+ FLORAL ATTRACTANT FOR
POPILLIA JAPONICA
MASS®

MONITORING KIT CONSISTING OF A PHEROMONE DISPENSER AND AN ATTRACTANT DISPENSER SPECIFICALLY FOR POPILLIA JAPONICA. THIS COMBINATION ALLOWS THE CAPTURE OF INDIVIDUALS OF BOTH SEXES WHILE AVOIDING TRAPPING OTHER POLLINATING INSECTS. IT IS NON-TOXIC, CONTAINS NO INSECTICIDES AND IS THEREFORE SAFE FOR BOTH ANIMALS AND THE ENVIRONMENT.



TARGETED PESTS

Popillia japonica.

WHERE TO USE

External environments, small gardens, small orchards and vegetable gardens.

MONITORING PERIOD

All yearlong, especially between May and August.

Jan. Feb. Mar. Apr. May June July Aug. Sep. Oct. Nov. Dec.

USER GUIDE

Use with MASS® Trap for Popillia Japonica.

USE WITH:

TRAP FOR POPILLIA JAPONICA
MASS®
P-04215CIN



ARTICLE CODE

P-04125CINKIT

TYPE OF PACKAGING

CARTON BOX

DISPENSER FOR PACKAGE

2 pcs (pheromone) +
1 pcs (attractant)

CASES FOR BOX

12 pcs

CARTON FOR PALLET

200

PRODUCT EAN CODE

8053251600453

COLLECTING BAGS FOR
POPILLIA JAPONICA
MASS®

COLLECTING BAG WITH ZIP FASTENER MADE OF COMPOSTABLE AND BIODEGRADABLE MATERIAL. SIZE 20×30 CM.



TARGETED PESTS

Popillia japonica.

WHERE TO USE

External environments, small gardens, small orchards and vegetable gardens.

MONITORING PERIOD

All yearlong, especially between May and August

Gen. Feb. Mar. Apr. Mag. Giu. Lug. Ago. Set. Ott. Nov. Dic.

USER GUIDE

Use with MASS® Trap for Popillia Japonica.

USE WITH:

TRAP FOR
POPILLIA JAPONICA MASS®
P-04215CIN



ARTICLE CODE

P-04125AINRIC

TYPE OF PACKAGING

CARTON BOX

BAGS FOR PACKAGING

10 pcs

CASES FOR BOX

10 pcs

CARTON FOR PALLET

200

PRODUCT EAN CODE

8053251600439

TRAP FOR TOMATO PESTS IDROTRAP

PHEROMONE MONITORING TRAP FOR DETECTING TOMATO PESTS (TUTA ABSOLUTA). IT CONSISTS OF A RED TRAY WITH AN INTEGRATED OVERFLOW SYSTEM THAT CONTROLS THE WATER LEVEL. MALE INSECTS ATTRACTED BY THE SEX PHEROMONE DISPENSED FROM THE TOP OF THE TRAP FALL INTO THE WATER. IT CAN BE CONNECTED TO A DRIP TRAY FOR AUTOMATIC FILLING OR ALTERNATIVELY REFILLING MUST BE DONE MANUALLY.



Tuta absoluta

TRAP FOR TOMATO PEST IDROTRAP

- ✓ ATTRACTS ONLY TARGETED INSECTS
- ✓ NON TOXIC
- ✓ INSECTICIDE FREE



NON TOXIC

INSECTICIDE FREE

SAFE FOR ANIMALS AND THE ENVIROMENT

READY TO USE

TARGETED PESTS

Tuta absoluta.

WHERE TO USE

Gardens, Vegetable Garden.

MONITORING PERIOD

All yearlong, especially between May and September.

Jan. Feb. Mar. Apr. **May** June July Aug. Sep. Oct. Nov. Dec.

USER GUIDE

Place IDROTRAP on the ground, maintaining a distance of 15/20 meters between each trap, fill the trap with water to the indicated level, taking care to add a small amount of liquid soap or vegetable oil.



ARTICLE CODE

P-25022CIN

TYPE OF PACKAGING

CARTON BOX

TRAPS FOR CASE

1 pc

CASES FOR DISPLAY

3 pcs

DISPLAY FOR PALLET

30

PRODUCT EAN CODE

8053251600484

TRAP FOR
POTATO PESTS
YATLORF



TRAP DESIGNED FOR MONITORING POTATO PARASITIC BEETLES (ELATERIDAE) WHOSE LARVAE FEED ON ROOTS AND UNDERGROUND ORGANS, CAUSING DECAYING AND WILTING OF ADULT PLANTS. IT IS SUITABLE FOR REGULAR SURVEILLANCE OF ELATERIDAE BEETLES (A. BREVIS; A. LITIGIOSUS; A. SORDIDUS). DEPENDING ON THE SEASON AND THE INSECT TO BE MONITORED, THE YATLORF TRAP SHOULD BE TRIGGERED WITH ONE OR MORE PHEROMONES TO ATTRACT THE TARGET SPECIES.

TARGETED PESTS

Coleopteri, Elateridi.

WHERE TO USE

External environments, gardens, orchards and vegetable gardens.

MONITORING PERIOD

All yearlong, depending on the season and the insect to detect.

Jan. Feb. Mar. Apr. May June July Aug. Sep. Oct. Nov. Dec.

USER GUIDE

Place the pheromone in the trap, depending on the insect to monitor, following the recommended calendar. End of March/ Early April: insert Brevis – Early April: add Sordidus – beginning of May: renew Sordidus – Late May: replace Brevis with Litigiosus – Mid-June: Renew Litigiosus – Early August: end of monitoring.



ARTICLE CODE

P-25011AIN

TYPE OF PACKAGING

CARTON BOX

TRAPS FOR CASE

1 pc

CASES FOR DISPLAY

6 pcs

DISPLAY FOR PALLET

12

PRODUCT EAN CODE

8053251600507



TRAP FOR
POTATO PESTS
YATLORF

✓ WEATHER-RESISTANT

✓ ATTRACTS ONLY TARGETED INSECTS



NON TOXIC

INSECTICIDE FREE

SAFE FOR ANIMALS AND THE ENVIROMENT



TRAP FOR **VESPID** MELATRAP

POLYETHYLENE TRAP FOR DETECTING VESPID WHEN USED IN CONJUNCTION WITH VESPOKIL.



TARGETED PESTS

Musca domestica e vespids.

WHERE TO USE

Terraces, gardens, canopies, orchards.

MONITORING PERIOD

From February to October, depending on the temperature of the season.

Jan. Feb. Mar. Apr. May June July Aug. Sep. Oct. Nov. Dec.

USER GUIDE

Place the trap at at least 1,5 m height, must be protected from the sun and near air flow.

SIZES AND DIMENSIONS

Diameter 180 mm – Height 140 mm.



ARTICLE CODE

P-04025IN

TYPE OF PACKAGING

CARTON BOX

SALE PIECES

1 pc

PIECES PER CARTON

6 pcs

PRODUCT EAN CODE

8053251600279



TRAP FOR **VESPID** MELATRAP

It includes:

- ✓ 1 APPLE-SHAPED TRAP BODY (BASE+COVER) WITH FUNNEL-SHAPED ENTRANCE FOR PESTS TO ENTER
- ✓ 1 META L HOOK
- ✓ TRANSPARENT LID FOR EASY VISUAL INSPECTION

CAN BE USED WITH:

VESPOKIL
P-01011DIN



NON TOXIC

INSECTICIDE FREE

ATTRACTS ONLY TARGETED INSECTS

EASY TO INSPECT



ATTRACTIVE FOR
WASPS
VESPOKIL



FOOD-BASED LIQUID FOR MONITORING VESPID, FOR USE IN APPROPRIATE MONITORING DEVICES.

TARGETED PESTS

Vespid.

WHERE TO USE

It is suggested for use in Melatrap (P-04025IN).
The trap can be placed in the following environments:
terraces, gardens, canopies, orchards.

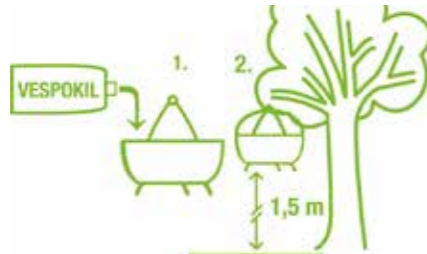
MONITORING PERIOD

From February to October, depending on the temperature of the season.

Jan. Feb. Mar. Apr. May June July Aug. Sep. Oct. Nov. Dec.

USER GUIDE

Pour 250 ml Vespokil (half bottle) into the Melatrap and dilute with 250 ml water. Maintain a 1:1 dilution with water.



BOTTLE DIMENSION

500 ml bottle.



ARTICLE CODE

P-01011DIN

TYPE OF PACKAGING

DISPLAY

SALE PIECES

1 pc

BOTTLE FOR DISPLAY

4 pcs | 500 ml each

PRODUCT EAN CODE

8053251600231



ATTRACTIVE FOR **WASPS**
VESPOKIL

✓ ATTRACTS ONLY THE TARGETED INSECTS

✓ INSECTICIDE-FREE

USE WITH:

MELATRAP
P-04025IN



NON TOXIC

INSECTICIDE FREE

ATTRACTS ONLY TARGETED INSECTS

FOOD ATTRACTANT



KIT MELATRAP + VESPOKIL

POLYETHYLENE TRAP FOR DETECTING VESPIDES WHEN USED IN CONJUNCTION WITH VESPOKIL.



FOOD-BASED LIQUID FOR MONITORING VESPIDES, FOR USE IN APPROPRIATE MONITORING DEVICES.



NON TOXIC

INSECTICIDE FREE

ATTRACTS ONLY TARGETED INSECTS

READY TO USE

TARGETED PESTS

Vespides.

WHERE TO USE

The trap can be placed in the following environments: terraces, gardens, canopies, orchards.

MONITORING PERIOD

From February to October, depending on the temperature of the season.

Jan. Feb. Mar. Apr. May June July Aug. Sep. Oct. Nov. Dec.

USER GUIDE

Pour 250 ml Vespokil (half bottle) into the Melatrap and dilute with 250 ml water. Maintain a 1:1 dilution with water.



ARTICLE CODE

P-04025INKIT

TYPE OF PACKAGING

CARTON BOX

KIT FOR PACKAGING

1 pc

PIECES FOR CARTON

3 pcs

CARTON FOR PALLET

84

PRODUCT EAN CODE

8053251600545





Goodbye unwelcome inhabitants!

InVerde rodent range includes a range of specific solutions to prevent and combat rodents in home, garden, garage and attic.

Rodent infestations are dangerous to health and can cause significant damage to electrical systems, motors and objects stored in attics, cellars and carports.

Our solutions include both repellents and attractants to prevent and keep rodents away, and specific traps designed according to Animal Welfare protocols to protect other animals in our garden.

RODENT LINE

REPELLENT LINE

RODENT LINE

GLUE TRAP **MINI**

GLUE TRAP **MAXI**

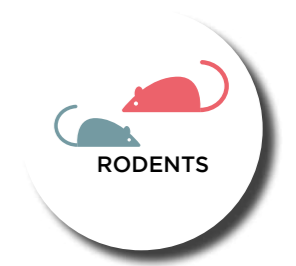
GLUE TRAP **STOP**

GLUE TUBE
FOR ADHESIVE TRAP

CORAL
BAIT STATION

BETA2
BAIT STATION

ROCK BAIT STATION
BAIT STATION



REPELLENT LINE

REPELLENT
MICE AND RATS

REPELLENT
MOLE

GLUE TRAP MINI

GLUE TRAP CONSISTING OF A WOODEN BOARD, WATERPROOFED ON THE GLUE SIDE.



GLUE TRAP MINI

- ✓ ADHESIVE THAT REMAINS UNALTERED EVEN AT LOW TEMPERATURES, ENSURING THE CAPTURE OF THE PEST REGARDLESS OF ENVIRONMENTAL CONDITIONS.
- ✓ SPACERS/SPHERES



NON TOXIC

WITHOUT POISON

READY FOR USE

LOW TEMPERATURE RESISTANT

ALSO FOR OUTDOOR USE

TARGETED PESTS

Mus musculus musculus, *Mus musculus domesticus*, crawling insects.

WHERE TO USE

Near:

- ducts and electrical panels, dishwashers, doors and cracks, lofts, cellars, garages;
- along the perimeters of rooms and along the rodent's habitual routes, which can be identified by detecting droppings, hair, burrows, greasy traces, footprints.

MONITORING PERIOD

All year round, especially in the period between October and April, when there are peaks in infestation intensity due to lower outdoor temperatures.

Jan. Feb. Mar. Apr. May June July Aug. Sep. Oct. Nov. Dec.

TRAP DIMENSIONS

Length: 190 mm | Width: 140 mm.



ARTICLE CODE

P-02031DIN

TYPE OF PACKAGING

MDF

TRAPS FOR CASE

2 pcs

CASES FOR DISPLAY

24 pcs

DISPLAY FOR PALLETTE

104

PRODUCT EAN CODE

8053251600064



GLUE TRAP MAXI

GLUE TRAP CONSISTING OF A WOODEN BOARD, WATERPROOFED ON THE GLUE SIDE.



GLUE TRAP MAXI

✓ ADHESIVE THAT REMAINS UNALTERED EVEN AT LOW TEMPERATURES, ENSURING THE CAPTURE OF THE PEST REGARDLESS OF ENVIRONMENTAL CONDITIONS.

✓ SPACERS/SPHERES



NON TOXIC

WITHOUT POISON

READY FOR USE

LOW TEMPERATURE RESISTANT

ALSO FOR OUTDOOR USE



TARGETED PESTS

Rattus rattus, Rattus norvegicus.

WHERE TO USE

Near:

- ducts and electrical panels, dishwashers, doors and cracks, lofts, cellars, garages;
- along the perimeters of rooms and along the rodent's habitual routes, which can be identified by detecting droppings, hair, burrows, greasy traces, footprints.

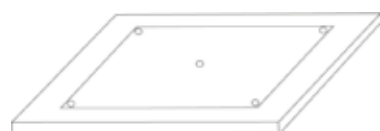
MONITORING PERIOD

All year round, especially in the period between October and April, when there are peaks in infestation intensity due to lower outdoor temperatures.

Jan. Feb. Mar. Apr. May June July Aug. Sep. Oct. Nov. Dec.

TRAP DIMENSIONS

Length: 280 mm | Width: 190 mm.



ARTICLE CODE

P-02005DIN

TYPE OF PACKAGING

MDF

TRAPS FOR CASE

2 pz

CASES FOR DISPLAY

12 pz

DISPLAY FOR PALLET

104

CODICE EAN PRODOTTO

8053251600057

GLUE TRAP STOP

BANANA-FLAVOURED GLUE TRAP FOR DETECTING THE PRESENCE OF SMALL RODENTS.



GLUE TRAP STOP

- ✓ EASY-TO-USE MONITORING DEVICE
- ✓ INSECTICIDE-FREE



NON TOXIC

WITHOUT POISON

READY FOR USE

EASY TO USE

TARGETED PESTS

Mus musculus musculus, Mus musculus domesticus.

WHERE TO USE

Near:

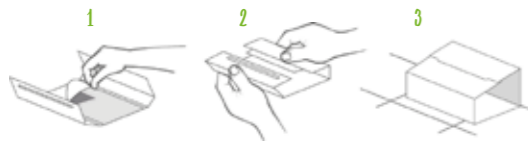
- ducts and electrical panels, dishwashers, doors and cracks, lofts, cellars, garages;
- along the perimeters of rooms and along the rodent's habitual routes, which can be identified by detecting droppings, hair, burrows, greasy traces, footprints;
- close to walls.

MONITORING PERIOD

All year round, especially in the period between October and April, when there are peaks in infestation intensity due to lower outdoor temperatures.

Jan. Feb. Mar. Apr. May June July Aug. Sep. Oct. Nov. Dec.

USER GUIDE



TRAP DIMENSIONS

Length: 254 mm | Width: 120.



ARTICLE CODE

P-02001DIN

TYPE OF PACKAGING

CARTON BOX

TRAPS FOR CASE

2 pcs

CASES FOR DISPLAY

24 pcs

DISPLAY FOR PALLET

192

PRODUCT EAN CODE

8053251600149



GLUE TUBE

FOR ADHESIVE TRAP

NON-POISONOUS GLUE FOR MICE AND INSECTS.



GLUE TUBE

FOR ADHESIVE TRAP

✓ EASY TO USE

✓ INSECTICIDE-FREE

✓ ODOURLESS



TARGETED PESTS

Mice, rats and crawling insects.

WHERE TO USE

Near: ducts and switchboards, dishwashers, doors and cracks, mezzanines, warehouses, production departments, cellars, garages, workshops, etc;

- around the perimeters of the premises to be pestcontrolled and along the rodent's habitual routes, which can be identified by detecting droppings, hair, burrows, greasy tracks, footprints, etc;
- close to walls.

MONITORING PERIOD

All year round, especially in the period between October and April, when there are peaks in infestation intensity due to lower outdoor temperatures.

Jan. Feb. Mar. Apr. May June July Aug. Sep. Oct. Nov. Dec.

USER GUIDE

Spread glue on boards of wood, plastic, cardboard or other non-absorbent material of a size suitable for the pest to be captured. A layer of a few millimetres (1-2) is sufficient to set an effective trap.



ARTICLE CODE

P-14001IN

TYPE OF PACKAGING

TUBE 135g

TUBO FOR CASE

1 pc

CASES FOR CARTON BOX

50 pcs

DISPLAY FOR PALLET

36

PRODUCT EAN CODE

8053251600330



NON TOXIC

WITHOUT POISON

READY FOR USE

EASY TO USE

CORAL

BAIT STATION

POLYPROPYLENE MONITORING DEVICE WITH TWO ENTRANCES TO DETECT THE PRESENCE OF MICE, RATS AND OTHER HARMFUL RODENTS.



TARGETED PESTS

Mus musculus musculus, Mus musculus domesticus, Rattus rattus, Rattus norvegicus.

WHERE TO USE

Near:

- gardens and all green areas where the presence of uncultivated grass makes the environment pleasant for rodents;
- ducts and electrical panels, dishwashers, doors and cracks, lofts, cellars, garages;
- along the perimeters of rooms and along the rodent's habitual routes, which can be identified by detecting droppings, hair, burrows, greasy traces, footprints;
- close to walls.

MONITORING PERIOD

All year round, especially in the period between October and April, when there are peaks in infestation intensity due to lower outdoor temperatures.

Jan. Feb. Mar. Apr. May June July Aug. Sep. Oct. Nov. Dec.

TRAP DIMENSIONS

Length: 230 mm | Width: 125 mm.



ARTICLE CODE

P-03024IN

TYPE OF PACKAGING

CARTON BOX

SALES PIECES

1 pc

UNITS FOR DISPLAY

6 pcs

CARTON FOR PALLET

40

PRODUCT EAN CODE

8053251600255



CORAL

BAIT STATION

- ✓ SECURITY LOCK WITH SPECIAL KEY SUPPLIED;
- ✓ WALL MOUNTING SYSTEM
- ✓ SPACER
- ✓ REMOVABLE INNER TRAY



NON TOXIC

WITHOUT POISON

READY FOR USE

EASY TO USE



BETA2

BAIT STATION

POLYPROPYLENE MONITORING DEVICE WITH TWO ENTRANCES TO DETECT THE PRESENCE OF MICE, RATS AND OTHER HARMFUL RODENTS.



BETA2

BAIT STATION

- ✓ ROBUST ENOUGH TO WITHSTAND WEATHERING AND IMPACTS
- ✓ PARTICULARLY SUITABLE FOR OUTDOOR USE
- ✓ DOUBLE SAFETY LOCK WITH KEY PROVIDED
- ✓ WALL MOUNTING SYSTEM



TARGETED PESTS

Mus musculus musculus, Mus musculus domesticus, Rattus rattus, Rattus norvegicus.

WHERE TO USE

Near:

- gardens and all green areas where the presence of uncultivated grass makes the environment pleasant for rodents;
- ducts and electrical panels, dishwashers, doors and cracks, lofts, cellars, garages;
- along the perimeters of rooms and along the rodent's habitual routes, which can be identified by detecting droppings, hair, burrows, greasy traces, footprints;
- close to walls.

MONITORING PERIOD

All year round, especially in the period between October and April, when there are peaks in infestation intensity due to lower outdoor temperatures.

Jan. Feb. Mar. Apr. May June July Aug. Sep. Oct. Nov. Dec.

TRAP DIMENSION

Length: 230 mm | Width: 190 mm.



ARTICLE CODE

P-03019IN

TYPE OF PACKAGING

CARTON BOX

SALE PIECES

1 pc

PIECES FOR CARTON

6 pcs

BOXES FOR PALLET

-

PRODUCT EAN CODE

8053251600248



NON TOXIC

WITHOUT POISON

READY FOR USE

EASY TO USE



ROCK BAIT STATION

BAIT STATION

SINGLE-ENTRY POLYPROPYLENE MONITORING DEVICE TO DETECT THE PRESENCE OF MICE, RATS AND OTHER HARMFUL RODENTS.



ROCK BAIT STATION

BAIT STATION

- ✓ ROBUST ENOUGH TO WITHSTAND THE WEATHER
- ✓ SECURITY LOCK WITH SPECIAL KEY SUPPLIED
- ✓ REMOVABLE INNER TRAY
- ✓ FIXING SYSTEM FOR SOFT OR HARD GROUND



FIXING SYSTEMS IN THE GROUND
AND KEY SUPPLIED

FIXING SYSTEMS
IN THE GROUND

TARGETED PESTS

Mus musculus musculus, Mus musculus domesticus, Rattus rattus, Rattus norvegicus.

WHERE TO USE

Near:

- green areas where the presence of uncultivated grass makes the environment agreeable to rodents
- in warehouses
- in grocery store backrooms
- in waste collection areas.

MONITORING PERIOD

All year round, especially in the period between October and April, when there are peaks in infestation intensity due to lower outdoor temperatures.

Jan. Feb. Mar. Apr. May June July Aug. Sep. Oct. Nov. Dec.

TRAP DIMENSIONS

Length: 250 | Width: 200 mm.



ARTICLE CODE

P-03025IN

TYPE OF PACKAGING

CARTON

SALE PIECES

1 pc

PIECES FOR CARTON

6 pcs

BOXES FOR PALLET

-

PRODUCT EAN CODE

8053251600262



REPELLENT FOR MICE AND RATS

AN ENVIRONMENTALLY FRIENDLY PRODUCT WITH SYNERGISTIC PLANT EXTRACTS REINFORCED BY U.B® MATRIX WHICH CREATES A PHYSICAL BARRIER TO MICE AND RATS, LEADING TO THEIR REMOVAL.



REPELLENT FOR MICE AND RATS

- ✓ LIQUID FORMULATION
- ✓ DOES NOT HARM VEGETATION
- ✓ SAFE FOR ANIMALS AND THE ENVIRONMENT



NON TOXIC

INSECTICIDE FREE

SAFE FOR ANIMALS AND THE ENVIRONMENT



TARGETED PESTS

Mice and rats.

WHERE TO USE

It is ideal for electrical panels, engine compartments, cellars and should be applied as it is, delimiting the area to be protected.

MONITORING PERIOD

All year round.

Jan. Feb. Mar. Apr. May June July Aug. Sep. Oct. Nov. Dec.

USER GUIDE

Ready-to-use product. Apply as it is, delimiting the area to be protected. One litre of product is sufficient for an application of approximately 20 linear metres.

Its special composition allows longlasting action. For a preventive action, simply distribute the product once every 15/20 days.



ARTICLE CODE

P-09069IN

TYPE OF PACKAGING

1L BOTTLE

BOTTLES FOR CARTON

6 pcs

BOXES FOR PALLET

84

PRODUCT EAN CODE

8053251600378

REPELLENT FOR
MOLE

AN ENVIRONMENTALLY FRIENDLY PRODUCT WITH SYNERGISTIC PLANT EXTRACTS REINFORCED BY U.B.® MATRIX WHICH CREATES A PHYSICAL BARRIER TO MOLES.



REPELLENT FOR
MOLE

- ✓ LIQUID FORMULATION
- ✓ DOES NOT HARM VEGETATION
- ✓ SAFE FOR ANIMALS AND THE ENVIRONMENT



NON TOXIC

INSECTICIDE FREE

SAFE FOR ANIMALS AND THE ENVIROMENT



TARGETED PESTS

Mole.

WHERE TO USE

It is ready to use and should be distributed in the areas to be freed including burrows and tunnels created by moles.

MONITORING PERIOD

All year round, especially between February and October.

Jan. Feb. Mar. Apr. May June July Aug. Sep. Oct. Nov. Dec.

INSTRUCTION FOR USE

Ready to use. Distribute in areas to be cleared including burrows and tunnels they create. One litre is sufficient for an application of approximately 20 linear metres or 18/20 holes.



ARTICLE CODE

P-09067IN

TYPE OF PACKAGING

1L BOTTLE

BOTTLE FOR CARTON

6 pcs

CARTON FOR PALLET


84



PRODUCT EAN CODE

8053251600354



inVerde products

CODE	PRODUCT NAME	CATEGORY	LINE
P-04146DIN	TRAP FOR FOOD MOTHS		CRAWLING AND FLYING INSECTS LINE
P-04067DIN	TRAP FOR CLOTHES MOTHS		CRAWLING AND FLYING INSECTS LINE
P-04294DIN	TRAP FOR COCKROACH		CRAWLING AND FLYING INSECTS LINE
P-04029DIN	CORNER TRAP FOR COCKROACH		CRAWLING AND FLYING INSECTS LINE
P-04114DIN	TRAP FOR SILVERFISH		CRAWLING AND FLYING INSECTS LINE
P-04179DIN	TRAP FOR BED BUGS		CRAWLING AND FLYING INSECTS LINE
P-04030DIN	CORNER FLY TRAP		CRAWLING AND FLYING INSECTS LINE
P-04057DIN	FLU BLADE FLY TRAP		CRAWLING AND FLYING INSECTS LINE
P-04093DIN	FRUIT FLIES LANTERN		CRAWLING AND FLYING INSECTS LINE
P-04254DIN	PLANT PARASITES TRAP		CRAWLING AND FLYING INSECTS LINE
P-02148DIN	TRAP FOR MOUSE AND CRAWLING INSECT		CRAWLING AND FLYING INSECTS LINE
P-04025IN	MELATRAP		CRAWLING AND FLYING INSECTS LINE
P-01011DIN	VESPOKIL		CRAWLING AND FLYING INSECTS LINE
P-25012CIN	CYMATRAP® GARDEN		CRAWLING AND FLYING INSECTS LINE
P-25012CIN	PEROMONE DISPENSER + ATTRACTANT	CRAWLING AND FLYING INSECTS LINE	
P-04215CIN	MASS® TRAP FOR POPILLIA JAPONICA	CRAWLING AND FLYING INSECTS LINE	
P-04125CIN	PEROMONE DISPENSER + ATTRACTANT	CRAWLING AND FLYING INSECTS LINE	
P-04125AIN	COLLECTING BAG	CRAWLING AND FLYING INSECTS LINE	
P-09066IN	REPELLENT FOR TIGER MOSQUITO	REPELLENT LINE	
P-09068IN	REPELLENT FOR ANT	REPELLENT LINE	
P-04262DIN	PEROMONE CHROMOTROPICS FOR FRUIT PLANTS	CHROMOTROPICS LINE	
P-04264DIN	PEROMONE CHROMOTROPICS FOR CHERRY	CHROMOTROPICS LINE	

P-04261DIN	PEROMONE CHROMOTROPICS FOR OLIVE TREES		CHROMOTROPICS LINE	
P-04263DIN	PEROMONE CHROMOTROPICS FOR TOMATO		CHROMOTROPICS LINE	
P-04265DIN	PEROMONE CHROMOTROPICS FOR VINE		CHROMOTROPICS LINE	
P-25017BDIN	BLUTRAP®		CHROMOTROPICS LINE	
P-25017GDIN	GOLDENTRAP®		CHROMOTROPICS LINE	
P-25022CIN	TRAP FOR TOMATO PESTS -IDROTRAP		CRAWLING AND FLYING INSECTS LINE	
P-25011AIN	TRAP FOR POTATO PESTS		CRAWLING AND FLYING INSECTS LINE	
P-02031DIN	GLUE TRAP MINI			RODENT LINE
P-02005DIN	GLUE TRAP MAXI			RODENT LINE
P-02001DIN	GLUE TRAP STOP			RODENT LINE
P-14001IN	GLUE TUBE FOR ADHESIVE TRAP	RODENT LINE		
P-03024IN	CORAL	RODENT LINE		
P-03019IN	BETA2	RODENT LINE		
P-03025IN	ROCK BAIT STATION	RODENT LINE		
P-09067IN	REPELLENT FOR MOLE	REPELLENT LINE		
P-09069IN	REPELLENT FOR MICE AND RATS	REPELLENT LINE		

POS material



inVerde LINE-UP



GENERIC DISPLAY



DISPLAY FOR POPILLIA JAPONICA AND BROWN MARMORATED STINK BUGS



CHROMOTROPIC DISPLAY



CHROMOTROPIC PHEROMONE TRAPS BROCHURE



REPELLENT BROCHURE



MAGNETIC BOXES FOR FOR SHOWCASES

References display and variable layouts on request

inVerde Team

EXPORT KEY
ACCOUNT CONSUMER

STEFANO FAVARI

+39 346 0853280
stefano.favari@geaitaly.it

SALES

FABRIZIO PIROVANO

+39 342 552 4026
fabrizio.pirovano@geaitaly.it

CUSTOMER CARE

NOEMI KERSTENS

+39 02 335 148 90
noemi.kerstens@geaitaly.it

QUALITY AND REGULATORY

NADIA ZINI

nzini@geaitaly.it

VITTORIA ANDREASI

vittoria.andreasi@geaitaly.it

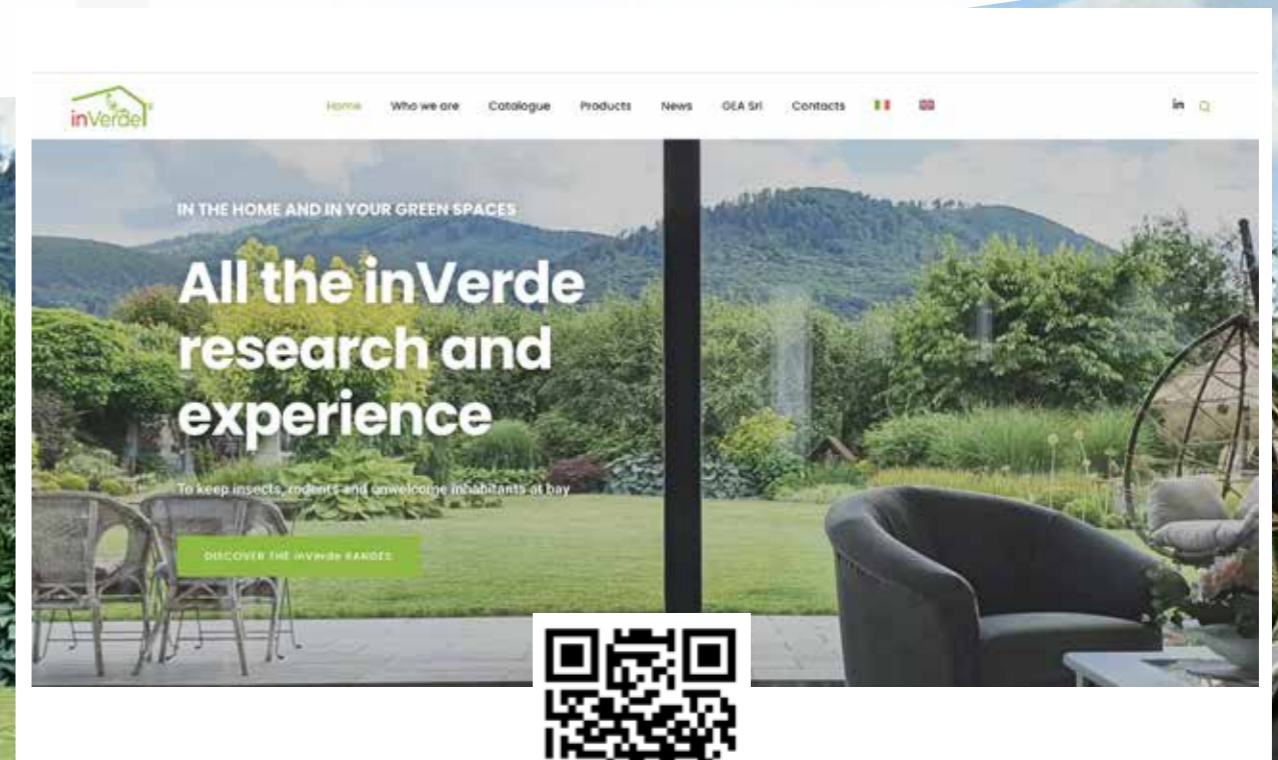
MARKETING

VALENTINA ANTONIAZZI

+39 360 106 3720
valentina.antoniazzi@geaitaly.it

FOR ANY QUESTION WRITE TO
inverde@geaitaly.it

Visit our site
<https://inverde.online/en/>



NOTE

A series of horizontal dotted lines for writing notes.