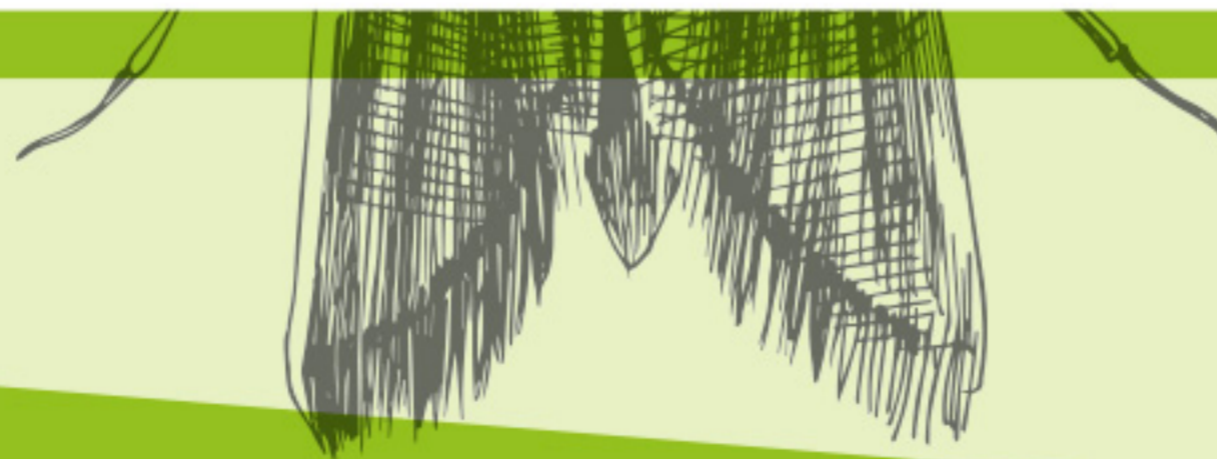




CATALOGUE 2025

HOME - GARAGE, BASEMENT AND ATTIC- GARDEN AND VEGETABLE GARDEN



CATALOGUE 2025

HOME - GARAGE, BASEMENT AND ATTIC- GARDEN AND VEGETABLE GARDEN



INDEX

CATALOGUE 2025 inVerde

- 5 All the experience and the research InVerde
- 6 OUR CERTIFICATIONS
- 8 Complete Line of product inVerde

- 10 **HOME**
- 14 TRAP FOR **FOOD MOTHS**
- 16 TRAP FOR **CLOTHES MOTHS**
- 18 CORNER TRAP FOR **COCKROACH**
- 20 TRAP FOR **SILVERFISH**
- 22 TRAP FOR **BED BUGS**
- 24 **CORNER FLY TRAP**
- 26 **FLY BLADE FLY TRAP**
- 28 **FRUIT FLIES LANTERN**
- 30 TRAP FOR **PLANT PARASITES**
- 32 ADHESIVE TRAP **QUADROBOX**

- 34 **GARAGES, BASEMENTS AND ATTICS**
- 38 GLUE TRAP **MINI**
- 40 GLUE TRAP **MAXI**
- 42 GLUE TRAP **STOP**
- 44 **GLUE TUBE** FOR ADHESIVE TRAP
- 46 **CORAL** - BAIT STATION
- 48 **BETA2** - BAIT STATION
- 50 **ROCK BAIT STATION**
- 52 REPELLENT **MOLE**
- 54 REPELLENT **MICE AND RATS**

- 56 **GARDEN and VEGETABLE GARDEN**
- 60 TRAP FOR **VESPIDS** - MELATRAP
- 62 ATTRACTANT FOR **WASPS AND HORNETS** - VESPOKIL
- 64 KIT **MELATRAP + VESPOKIL**
- 66 **BROWN MARMORATED STINK BUG TRAP**
CYMATRAP® GARDEN

- 68 PHEROMONE DISPENSER+ATTRACTANT FOR
BROWN MARMORATED STINK BUG
- 70 TRAP FOR **POPILLIA JAPONICA MASS®**
- 70 PHEROMONE DISPENSER+FLOREAL ATTRACTANT FOR
POPILLIA JAPONICA
- 72 COLLECTING BAGS FOR **POPILLIA JAPONICA**
- 74 REPELLENT FOR **TIGER MOSQUITO**
- 76 REPELLENT FOR **ANT**
- 78 PHEROMONE CHROMOTROPIC TRAPS FOR **FRUIT PLANTS**
- 80 PHEROMONE CHROMOTROPIC TRAPS FOR **CHERRY**
- 82 PHEROMONE CHROMOTROPIC TRAPS FOR **OLIVE TREES**
- 84 PHEROMONE CHROMOTROPIC TRAPS FOR **TOMATO**
- 86 PHEROMONE CHROMOTROPIC TRAPS FOR **GRAPEVINE**
- 88 PANEL FOR TRAPPING **FLIES,WHITEFLIES AND**
LEAFHOPPERS - GOLDENTRAP®
- 90 TRAP FOR **TOMATO PESTS** - IDROTRAP
- 92 PHEROMONE DISPENSERS FOR **TOMATO LEAFMINER**
IDROTRAP
- 94 TRAP FOR **POTATO PESTS** - YATLORF
- 96 PHEROMONE DISPENSERS FOR **POTATO PESTS** - YATLORF
(*A.brevis*)
- 97 PHEROMONE DISPENSERS FOR **POTATO PESTS** - YATLORF
(*A.litigiosus*)
- 98 PHEROMONE DISPENSERS FOR **POTATO PESTS** - YATLORF
(*A.sordidus*)

- 98 inVerde PRODUCTS
- 100 inVerde TEAM
- 102 General terms of sale

All the experience and the research
inVerde

SAFE PRODUCTS WITH NO INSECTICIDES

InVerde offers a complete and specialised line of solution to prevent and treat domestic infestation of insects and unwanted pests.

Our products are designed to attract only the targeted insects, ensuring the safety of the environment and of our domestic animals.

All InVerde products are non-toxic and safe, for they do not contain poison.

Our company is enviromentally friendly and we work every day to find new and sustainable formulations.

PROFESSIONAL PRODUCTS FOR DOMESTIC USE

InVerde products are designed specifically for daily and domestic use. Our products are environmentally sustainable and safe for both pepole and pets who share home and gardens with us.



Our certifications



UNI EN ISO 9001:2015
Quality management systems.

ISO 45001:2018
Occupational Safety & Health Management System at work.

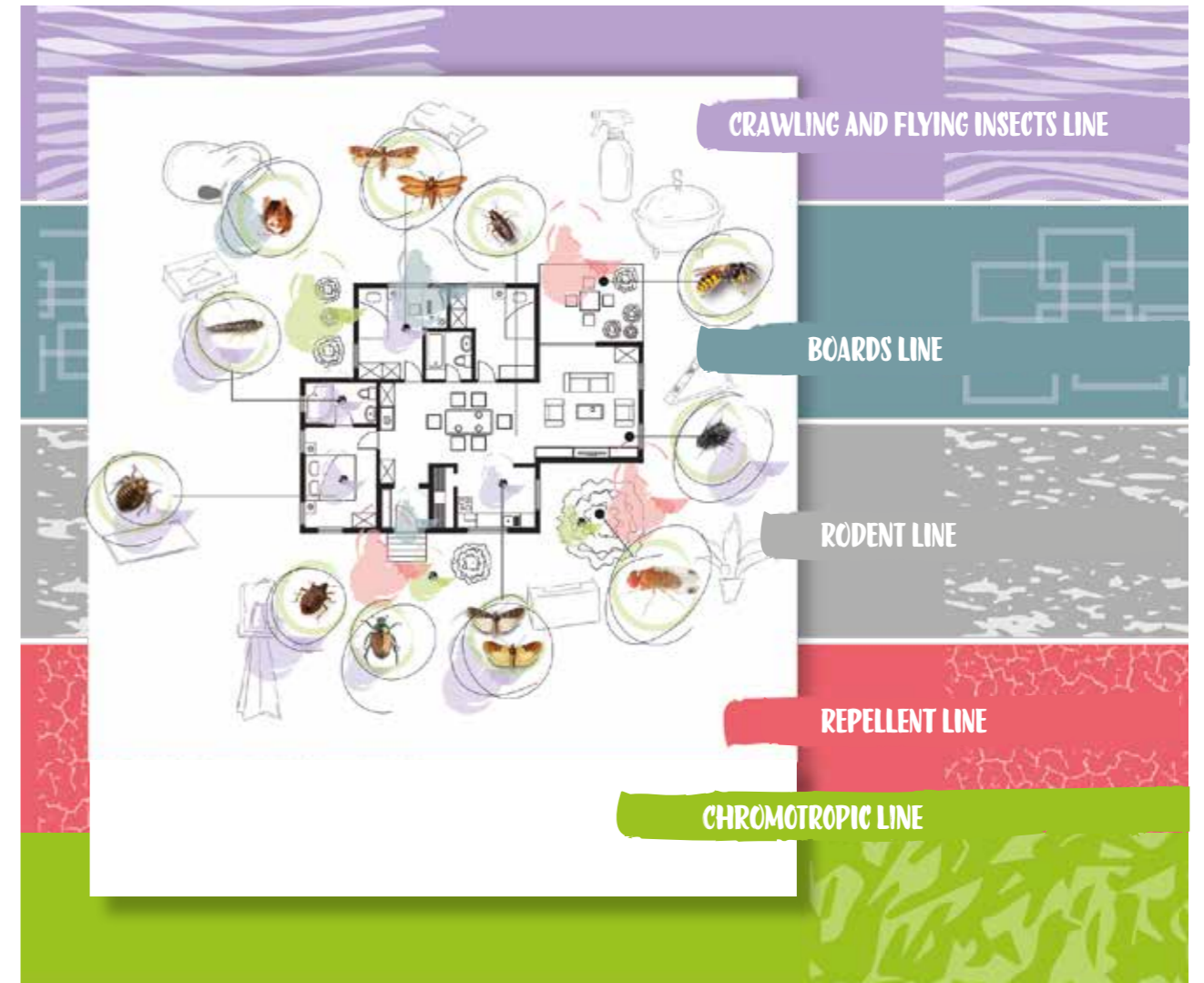
UNI EN ISO 14001:2015
Environmental management systems.

UNI ISO 21001:2018
Management Systems for Organisations education and training organisations.

GREENSTOP



Effectiveness and safety at home and outside.





Complete line of product for monitoring infestants.

Non-toxic products. Specially designed for use in: kitchens, dining rooms, living rooms, bedrooms, bathrooms, gardens, basements and attics.

INSECTICIDE-FREE.



inVerde FOR YOUR HOME



A SAFE HOME WITHOUT UNWELCOME INHABITANTS

Pests in the home can hide in pantries, cupboards, mattresses, bathrooms, kitchens, sofas and curtains. The first defence for home security is to keep these unwelcome inhabitants away by using repellents, deterrents and food attractants. To intervene in the event of an infestation in progress, it is important to use professional and effective products without dangerous poisons, intervening promptly and safely.

Some insects are annoying and hide themselves from view. This is why our ranges also include monitoring systems that allow you to check for the presence or absence of the most insidious insects, such as pantry moths.

CRAWLING AND FLYING LINE



TRAP FOR
FOOD MOTHS

TRAP FOR
CLOTHES MOTHS

NEW

CORNER TRAP FOR
COCKROACH

TRAP FOR
SILVERFISH

TRAP FOR
BED BUGS

CORNER FLY
TRAP

FLY BLADE FLY
TRAP

FRUIT FLIES
LANTERN

PLANT PARASITES
TRAP

ADESIVE TRAP
QUADROBOX

TRAP FOR FOOD MOTHS

NON TOXIC

INSECTICIDE FREE

SAFE FOR ANIMALS AND THE ENVIROMENT



- ✓ EASY-TO-USE MONITORING DEVICE
- ✓ WITH SPECIFIC PHEROMONE
- ✓ INSECTICIDE-FREE
- ✓ ATTRACTS ONLY TARGETED INSECTS
- ✓ EFFICACY UP TO 3 MONTHS DOUBLE POSSIBILITY OF USE THANKS TO THE DOUBLE-SIDED ADHESIVE ON THE TRAP:
 - APPLIED TO THE DOOR
 - APPLIED TO THE BASE OF THE SHELF



Ephestia kuehniella



Plodia interpunctella



PRE-ACTIVATED CARDBOARD TRAPS WITH A SPECIAL PHEROMONE FOR FOOD MOTHS.

TARGETED PESTS

Food moths
(*Ephestia kuehniella*, *Plodia interpunctella*)

WHERE TO USE

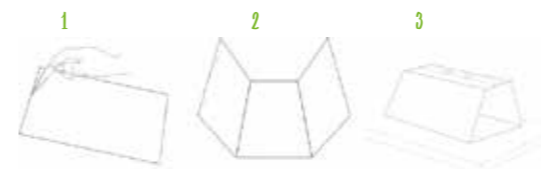
In kitchens, pantries, cupboards, shelves and all places where food is stored.

MONITORING PERIOD

All year round, especially between March and October, when there is an increase in this type of pest.

Gen. Feb. Mar. Apr. Mag. Giu. Lug. Ago. Set. Ott. Nov. Dic.

USER GUIDE



TRAP DIMENSIONS

Length 157 mm | Thickness 80 mm.



CRAWLING AND FLYING INSECT LINE



ARTICLE CODE	P-04146DIN
TYPE OF PACKAGING	CARTON BOX
TRAPS FOR CASE	2 pcs
CASES FOR DISPLAY	12 pcs
DISPLAY FOR PALLET	216
PRODUCT EAN CODE	8053251600026



TRAP FOR CLOTHES MOTHS

NON TOXIC

INSECTICIDE FREE

SAFE FOR ANIMALS AND THE ENVIROMENT



- ✓ EASY-TO-USE MONITORING DEVICE
- ✓ INSECTICIDE-FREE
- ✓ ATTRACTS ONLY TARGETED INSECTS
- ✓ EFFICACY UP TO 3 MONTHS



Tineola bisselliella



Tinea pellionella



PRE-ACTIVATED CARDBOARD TRAPS WITH A SPECIAL PHEROMONE FOR CLOTHES MOTH..

TARGETED PESTS

Cloth moths
(*Tineola bisselliella* e *Tinea pellionella*)

WHERE TO USE

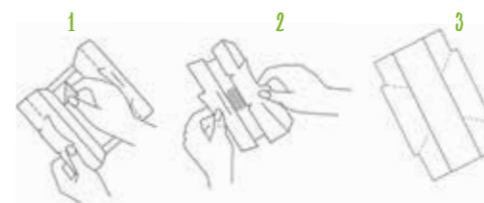
Wardrobes, cupboards, drawers and all places where furs, wool and silk are stored.

MONITORING PERIOD

All year round, especially between March and October, when there is an increase in this type of infestation.

Gen. Feb. Mar. Apr. Mag. Giu. Lug. Ago. Set. Ott. Nov. Dic.

USER GUIDE



TRAP DIMENSIONS

Length 157 mm | Thickness 80 mm.



CRAWLING AND FLYING INSECT LINE



ARTICLE CODE

P-04067DIN

TYPE OF PACKAGING

CARTON BOX

TRAPS FOR CASE

2 pcs

CASES FOR DISPLAY

12 pcs

DISPLAY FOR PALLET

216 pcs

PRODUCT EAN CODE

8053251600019



NEW

CORNER TRAP FOR COCKROACH

NON TOXIC

INSECTICIDE FREE

SAFE FOR ANIMALS AND THE ENVIROMENT



- ✓ EASY-TO-USE MONITORING DEVICE
- ✓ ATTRACTANT GEL ON ADHESIVE SURFACE
- ✓ ATTRACTS ONLY TARGETED INSECTS



Blattella germanica



Blatta orientalis



LICORICE-FLAVOURED TRIANGULAR ADHESIVE MONITORING TRAP FOR DETECTING COCKROACHES AND CRAWLING INSECTS. IT IS NON-TOXIC, CONTAINS NO INSECTICIDES AND IS THEREFORE SAFE FOR BOTH ANIMALS AND THE ENVIRONMENT, ATTRACTING ONLY THE TARGET INSECTS.

TARGETED PESTS

Blattella germanica, *Blatta orientalis*, *Periplaneta americana* and *Supella longipalpa*

WHERE TO USE

Near: electrical panels, dishwashers, sinks, ovens, doors and perimeters, hot and humid environments in general, and wherever cockroaches are suspected in kitchens, offices and dimly lit areas.

MONITORING PERIOD

All year round, especially between April and October, although in a conditioned environment the insects are always active (although they are seasonal).

Gen. Feb. Mar. Apr. Mag. Giu. Lug. Ago. Set. Ott. Nov.

USER GUIDE

Place the Corner Trap for Cockroaches in domestic environments, especially kitchens, storages, near electric cables and wires.

TRAP DIMENSIONS

Length 194 mm – Width 135 mm.

ASSEMBLED TRAP DIMENSIONS

Leght 135 mm – Width 80 mm – Height 18 mm.



ARTICLE CODE

P-04029DIN

TYPE OF PACKAGING

CARTON BOX

TRAPS FOR CASE

2 pcs

CASES FOR DISPLAY

12 pcs

DISPLAY FOR PALLET

108

PRODUCT EAN CODE

8053251600552



CRAWLING AND FLYING INSECT LINE

TRAP FOR SILVERFISH

EASY TO USE

WITH ATTRACTANT GEL ON ADHESIVE SURFACE

NON TOXIC

INSECTICIDE FREE

SAFE FOR ANIMALS AND THE ENVIRONMENT



- ✓ 4 INSECT ENTRANCES
- ✓ INSECTICIDE-FREE
- ✓ ATTRACTS ONLY TARGETED INSECTS
- ✓ EASY TO USE AND FIX



Lepisma saccharina



LICORICE-FLAVOURED GLUE TRAPS FOR SILVERFISH MONITORING.

TARGETED PESTS EASY TO USE

Lepisma saccharina

WHERE TO USE

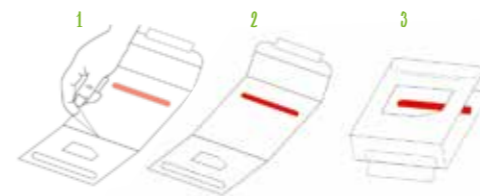
In kitchens, bathrooms, bookcases and near: electrical conduits, dishwashers, sinks, ovens, fan coils, doors and perimeters, hot and humid environments in general, and wherever its presence is suspected.

MONITORING PERIOD

All year round, especially between April and October, although in a conditioned environment insects are always active.

Gen. Feb. Mar. Apr. Mag. Giu. Lug. Ago. Set. Ott. Nov. Dic.

USER GUIDE



TRAP DIMENSIONS

Length 160 mm | Width 80 mm.

ASSEMBLED TRAP DIMENSIONS

Length 52 mm - Width 80 mm - Height 23 mm.



CRAWLING AND FLYING INSECT LINE



ARTICLE CODE

P-04114DIN

TYPE OF PACKAGING

CARTON BOX

TRAPS FOR CASE

2 pcs

CASES FOR DISPLAY

12 pcs

DISPLAY FOR PALLET

216

PRODUCT EAN CODE

8053251600033



TRAP FOR BED BUGS

EASY TO USE

NON TOXIC

INSECTICIDE FREE

SAFE FOR ANIMALS AND THE ENVIROMENT



- ✓ EASY-TO-USE MONITORING DEVICE
- ✓ PARTICULAR SHAPE, WHICH INVITES BUGS TO TAKE SHELTER INSIDE
- ✓ ATTRACTS ONLY TARGETED INSECTS
- ✓ EASY TO USE AND FIX



Cimex lectularius



GLUE TRAP TO DETECT THE PRESENCE OF BED BUGS.

TARGETED PESTS

Cimex lectularius.

WHERE TO USE

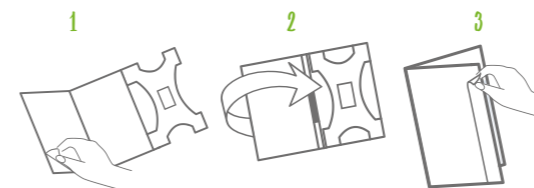
Under sofa cushions, at the foot of the bed, along the footboard or skirting board, behind picture frames, on the headboard, behind curtains.

MONITORING PERIOD

All year round.

Jan. Feb. Mar. Apr. May June July Aug. Sep. Oct. Nov. Dec.

USER GUIDE



TRAP DIMENSIONS

Length 160 mm | Width 85 mm.



CRAWLING AND FLYING INSECT LINE



ARTICLE CODE

P-04179DIN

TYPE OF PACKAGING

CARTON BOX

TRAPS FOR CASE

2 pcs

CASES FOR DISPLAY

12 pcs

DISPLAY FOR PALLET

216

PRODUCT EAN CODE

8053251600125



CORNER FLY TRAP

- NON TOXIC
- INSECTICIDE FREE
- SAFE FOR ANIMALS AND THE ENVIROMENT
- READY TO USE
- EASY TO USE



- ✓ EASY TO USE AND FIX THANKS TO THE DOUBLE-SIDED ADHESIVE TAPE
- ✓ CATCHES WELL CONCEALED INSIDE THE SPECIAL SHAPE
- ✓ ONLY ATTRACTS TARGET INSECTS THANKS TO THE FRUITY AROMA RELEASED



BANANA-FLAVOURED CORNER GLUE TRAP FOR MONITORING FLIES. ITS TRIANGULAR SHAPE ALLOWS PERFECT ADHESION TO THE CORNER OF WINDOWS, THANKS TO THE DOUBLE-SIDED ADHESIVE TAPE ON THE BACK OF THE TRAP.

TARGETED PESTS

Musca domestica.

WHERE TO USE

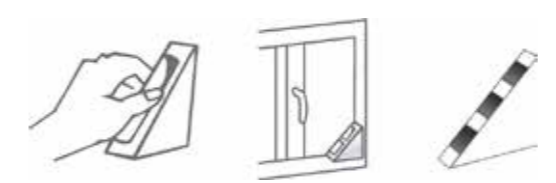
Windows.

MONITORING PERIOD

All year round, especially between April and October, when there is an increase in this type of infestation.

Jan. Feb. Mar. Apr. May June July Aug. Sep. Oct. Nov. Dec.

USER GUIDE

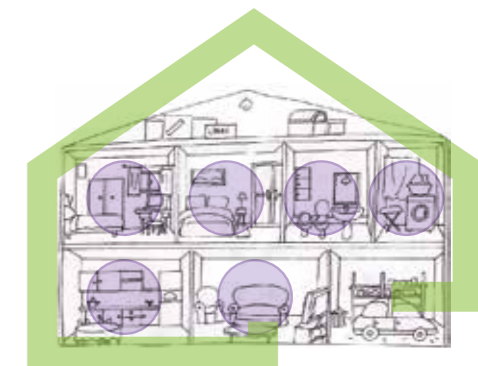


TRAP DIMENSIONS

Length 100 mm | Width 100 mm - Height 20 mm.



ARTICLE CODE	P-04030DIN
TYPE OF PACKAGING	CARTON BOX
TRAPS FOR CASE	2 pcs
CASES FOR DISPLAY	12 pcs
DISPLAY FOR PALLET	108
PRODUCT EAN CODE	8053251600101



FLY BLADE

TRAP

NON TOXIC

INSECTICIDE FREE

SAFE FOR ANIMALS AND THE ENVIROMENT



- ✓ EASY TO USE AND FIX THANKS TO THE DOUBLE-SIDED ADHESIVE TAPE
- ✓ INSECTICIDE-FREE
- ✓ ATTRACTS ONLY TARGET INSECTS THANKS TO THE WINE AROMA RELEASED



Musca domestica



WINE-FLAVOURED GLUE TRAP FOR FLIES AND FRUIT FLIES. ITS SHAPE ALLOWS PERFECT ADHESION TO THE WINDOW, THANKS ALSO TO THE DOUBLE-SIDED ADHESIVE TAPE POSITIONED ALONG THE ENTIRE ADHESIVE SIDE OF THE TRAP.

TARGETED PESTS

Musca domestica.

WHERE TO USE

Windows.

MONITORING PERIOD

All year round, especially between April and October, when there is an increase in this type of infestation.

Jan. Feb. Mar. Apr. May June July Aug. Sep. Oct. Nov. Dec.

USER GUIDE



TRAP DIMENSIONS

Length 140 mm | Width 80 mm.



ARTICLE CODE

P-04057DIN

TYPE OF PACKAGING

CARTON BOX

TRAPS FOR CASE

3 pcs

CASES FOR DISPLAY

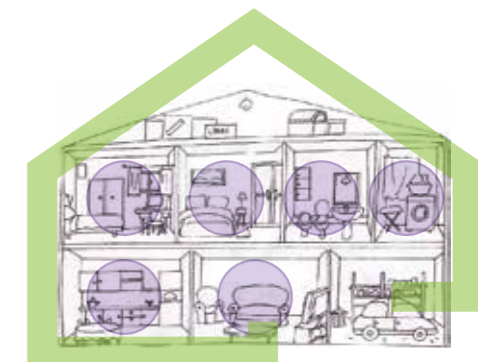
12 pcs

DISPLAY FOR PALLET

216

PRODUCT EAN CODE

8053251600118



FRUIT FLIES

LANTERN

NON TOXIC

INSECTICIDE FREE

SAFE FOR ANIMALS AND THE ENVIROMENT



A MONITORING DEVICE DEVELOPED FOR THE FRUIT FLY, CONSISTING OF A FOLDED GLUE TRAP WITH A BOTTLE CONTAINING A SPECIFIC LIQUID ATTRACTANT INSIDE.

TARGETED PESTS

Drosophila spp.

WHERE TO USE

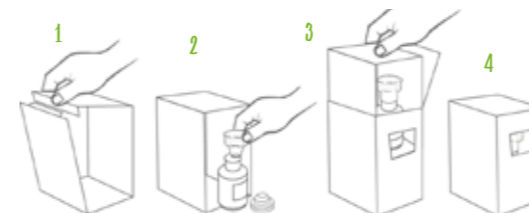
For indoor use near places where fruit flies are present, e.g: fruit baskets, vinegar bottles, dispensers of sugary drinks, wine or beer, etc.

MONITORING PERIOD

All year round, especially between April and October, when an increase in the presence of this target insect can be recorded.

Jan. Feb. Mar. Apr. May June July Aug. Sep. Oct. Nov. Dec.

USER GUIDE



TRAP DIMENSIONS

ASSEMBLED TRAP DIMENSIONS

Length: 396.5 mm | Height: 75 mm
Thickness: 75 mm.

- ✓ DOUBLE CAPTURE SYSTEM BOTH INSIDE THE BOTTLE AND ON THE ADHESIVE SURFACE OF THE TRAP
- ✓ ATTRACTS ONLY THE TARGETED INSECTS INSECTICIDE
- ✓ INSECTICIDE-FREE



Drosophila spp.



ARTICLE CODE

P-04093DIN

TYPE OF PACKAGING

CARTON BOX

TRAPS FOR CASE

1 pc

CASES FOR DISPLAY

6 pcs

DISPLAY FOR PALLET

300

PRODUCT EAN CODE

8053251600217



PLANT PARASITES TRAP

NON TOXIC

INSECTICIDE FREE

SAFE FOR ANIMALS AND THE ENVIROMENT



✓ ATTRACTS ONLY THE TARGETED INSECTS

✓ INSECTS, ATTRACTED BY THE YELLOW COLOUR GET CAUGHT IN THE TRAP



Mosca bianca



CHROMOTROPIC GLUE-BASED MONITORING DEVICE FOR DETECTING FLIES, MIDGES AND PLANT PESTS. ITS SHAPE RESEMBLES THAT OF A FLOWER WITH A TIP FOR INSERTING IT IN ANY POT.

TARGETED PESTS

Flies, drosophila, scarf flies, whiteflies, winged aphids, thrips, agromyzids and other pests.

WHERE TO USE

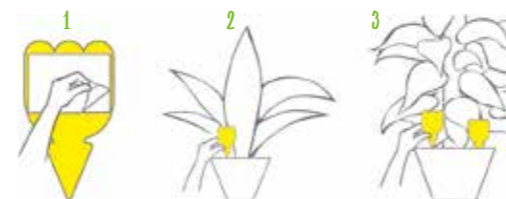
Only in indoor areas, used in pots of ornamental plants.

MONITORING PERIOD

All year round, especially between April and October, when there is an increase in this type of infestation.

Jan. Feb. Mar. Apr. May June July Aug. Sep. Oct. Nov. Dec.

USER GUIDE



TRAP DIMENSIONS

Length: 160 mm | Width: 80 mm.



CRAWLING AND FLYING INSECT LINE



ARTICLE CODE

P-04254DIN

TYPE OF PACKAGING

PLASTIC

TRAPS FOR CASE

2 pcs

CASES FOR DISPLAY

12 pcs

DISPLAY FOR PALLET

216

PRODUCT EAN CODE

8053251600132



QUADROBOX

GLUE TRAP

EASY TO USE

NON TOXIC

INSECTICIDE FREE

SAFE FOR ANIMALS AND THE ENVIROMENT



- ✓ EASY-TO-USE MONITORING DEVICE
- ✓ INSECTICIDE-FREE
- ✓ PROTECTED CATCHES



Blatta orientalis



ADHESIVE TRAP HAZELNUT FLAVOURED TO DETECT AND MONITOR CRAWLING INSECTS.

TARGETED PESTS

Crawling insects.

WHERE TO USE

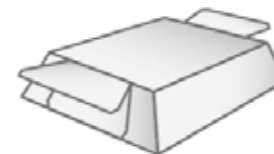
- Near:
 - ducts and electrical panels, dishwashers, doors and cracks, lofts, cellars, garages;
 - along the perimeter of the rooms to be monitored.

MONITORING PERIOD

All year round, especially between October and April, when there are peaks of infestation intensity due to lower outdoor temperatures.

Jan. Feb. Mar. Apr. May June July Aug. Sep. Oct. Nov. Dec.

USER GUIDE



TRAP DIMENSIONS

Length: 126 mm | Thickness: 122 mm | Height: 12.5 mm



ARTICLE CODE

P-02148DIN

TYPE OF PACKAGING

CARTONE

TRAPS FOR CASE

1 pc

CASES FOR DISPLAY

12 pz

DISPLAY FOR PALLET

165

PRODUCT EAN CODE

8053251600071



CRAWLING AND FLYING INSECT LINE

The specific line to fight pests of garages, basements and attics



GOODBYE UNWANTED PESTS!

The inVerde line for garages, basements and attics.

Some pests' infestations are dangerous for health and can cause important damage to electrical equipment, engines and objects stored in attics, garages and basements.

Our solutions include both repellents and attractants to prevent and keep away pests, and specific traps studied with the Animal Welfare protocol in mind, to protect the other animals in our garden.

BOARDS

RODENTS

REPELLENTS



GLUE TRAP
MINI

GLUE TRAP
MAXI

GLUE TRAP
STOP

GLUE TUBE
FOR ADHESIVE TRAP

CORAL
BAIT STATION

BETA2
BAIT STATION

ROCK BAIT STATION

REPELLENT
MOLE

REPELLENT
MICE AND RATS

GLUE TRAP
MINI

NON TOXIC

WITHOUT POISON

READY FOR USE

LOW TEMPERATURE RESISTANT

ALSO FOR OUTDOOR USE



✓ **ADHESIVE THAT REMAINS UNALTERED EVEN AT LOW TEMPERATURES, ENSURING THE CAPTURE OF THE PEST REGARDLESS OF ENVIRONMENTAL CONDITIONS.**

✓ **SPACERS/SPHERES**



GLUE TRAP CONSISTING OF A WOODEN BOARD, WATERPROOFED ON THE GLUE SIDE.

● **TARGETED PESTS**

Crawling insects.

● **WHERE TO USE**

Near:

- ducts and electrical panels, dishwashers, doors and cracks, lofts, cellars, garages;
- along the perimeters of rooms to be monitored
- close to the walls

● **MONITORING PERIOD**

All year round, especially in the period between October and April, when there are peaks in infestation intensity due to lower outdoor temperatures.

Jan. Feb. Mar. **Apr.** May June July Aug. Sep. Oct. Nov. Dec.

● **TRAP DIMENSIONS**

Length: 190 mm | Width: 140 mm.



BOARDS



ARTICLE CODE

P-02031DIN

TYPE OF PACKAGING

MDF

TRAPS FOR CASE

2 pcs

CASES FOR DISPLAY

24 pcs

DISPLAY FOR PALLETTE

104

PRODUCT EAN CODE

8053251600064

GLUE TRAP
MAXI

NON TOXIC

WITHOUT POISON

READY FOR USE

LOW TEMPERATURE RESISTANT

ALSO FOR OUTDOOR USE



✓ **ADHESIVE THAT REMAINS UNALTERED EVEN AT LOW TEMPERATURES, ENSURING THE CAPTURE OF THE PEST REGARDLESS OF ENVIRONMENTAL CONDITIONS.**

✓ **SPACERS/SPHERES**



GLUE TRAP CONSISTING OF A WOODEN BOARD, WATERPROOFED ON THE GLUE SIDE.

● **TARGETED PESTS**

Crawling insects.

● **WHERE TO USE**

Near:

- ducts and electrical panels, dishwashers, doors and cracks, lofts, cellars, garages;
- along the perimeters of rooms to be monitored
- close to the walls

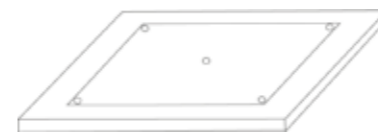
● **MONITORING PERIOD**

All year round, especially in the period between October and April, when there are peaks in infestation intensity due to lower outdoor temperatures.

Jan. Feb. Mar. Apr. May June July Aug. Sep. Oct. Nov. Dec.

● **TRAP DIMENSIONS**

Length: 280 mm | Width: 190 mm.



ARTICLE CODE

P-02005DIN

TYPE OF PACKAGING

MDF

TRAPS FOR CASE

2 pcs

CASES FOR DISPLAY

12 pcs

DISPLAY FOR PALLET

104 pcs

PRODUCT EAN CODE

8053251600057

BOARDS

GLUE TRAP
STOP

NON TOXIC

WITHOUT POISON

READY FOR USE

EASY TO USE



✓ EASY-TO-USE MONITORING DEVICE

✓ INSECTICIDE-FREE



BANANA-FLAVOURED GLUE TRAP FOR DETECTING THE PRESENCE OF SMALL RODENTS.

● **TARGETED PESTS**

Crawling insects.

● **WHERE TO USE**

Near:

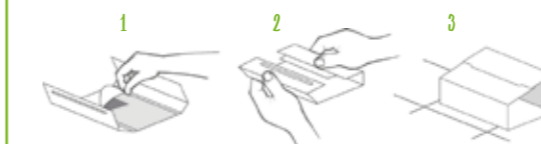
- ducts and electrical panels, dishwashers, doors and cracks, lofts, cellars, garages;
- along the perimeters of rooms to be monitored
- close to the walls

● **MONITORING PERIOD**

All year round, especially in the period between October and April, when there are peaks in infestation intensity due to lower outdoor temperatures.

Jan. Feb. Mar. **Apr.** May June July Aug. Sep. Oct. Nov. Dec.

● **USER GUIDE**



● **TRAP DIMENSIONS**

Length: 254 mm | Width: 120.



BOARDS



ARTICLE CODE

P-02001DIN

TYPE OF PACKAGING

CARTON BOX

TRAPS FOR CASE

2 pcs

CASES FOR DISPLAY

24 pcs

DISPLAY FOR PALLET

192

PRODUCT EAN CODE

8053251600149

GLUE TUBE

FOR ADHESIVE TRAP

NON TOXIC

WITHOUT POISON

READY FOR USE

EASY TO USE



✓ EASY TO USE

✓ INSECTICIDE-FREE

✓ ODOURLESS

NON-POISONOUS GLUE FOR INSECTS.

● **TARGETED PESTS**

Crawling insects.

● **WHERE TO USE**

Near:

- ducts and electrical panels, dishwashers, doors and cracks, lofts, cellars, garages;
- along the perimeters of rooms to be monitored
- close to the walls

● **MONITORING PERIOD**

All year round, especially in the period between October and April, when there are peaks in infestation intensity due to lower outdoor temperatures.

Jan. Feb. Mar. Apr. May June July Aug. Sep. Oct. Nov. Dec.

● **USER GUIDE**

Spread glue on boards of wood, plastic, cardboard or other non-absorbent material of a size suitable for the pest to be captured. A layer of a few millimetres (1-2) is sufficient to set an effective trap.



ARTICLE CODE

P-14001IN

TYPE OF PACKAGING

TUBE 135g

TUBO FOR CASE

1 pc

CASES FOR CARTON BOX

50 pcs

DISPLAY FOR PALLET

36

PRODUCT EAN CODE

8053251600330

CORAL

BAIT STATION

NON TOXIC

WITHOUT POISON

READY FOR USE

EASY TO USE



- ✓ SECURITY LOCK WITH SPECIAL KEY SUPPLIED;
- ✓ WALL MOUNTING SYSTEM
- ✓ SPACER
- ✓ REMOVABLE INNER TRAY



POLYPROPYLENE MONITORING DEVICE WITH TWO ENTRANCES TO DETECT THE PRESENCE OF MICE, RATS AND OTHER HARMFUL RODENTS.

TARGETED PESTS

Mus musculus musculus, Mus musculus domesticus, Rattus rattus, Rattus norvegicus.

WHERE TO USE

- Near:
- gardens and all green areas where the presence of uncultivated grass makes the environment pleasant for rodents;
 - ducts and electrical panels, dishwashers, doors and cracks, lofts, cellars, garages;
 - along the perimeters of rooms and along the rodent's habitual routes, which can be identified by detecting droppings, hair, burrows, greasy traces, footprints;
 - close to walls.

MONITORING PERIOD

All year round, especially in the period between October and April, when there are peaks in infestation intensity due to lower outdoor temperatures.

Jan. Feb. Mar. Apr. May June July Aug. Sep. Oct. Nov. Dec.

TRAP DIMENSIONS

Length: 230 mm | Width: 125 mm.



ARTICLE CODE

P-03024IN

TYPE OF PACKAGING

CARTON BOX

SALES PIECES

1 pc

UNITS FOR DISPLAY

6 pcs

CARTON FOR PALLET

40

PRODUCT EAN CODE

8053251600255



BETA2

BAIT STATION



- ✓ ROBUST ENOUGH TO WITHSTAND WEATHERING AND IMPACTS
- ✓ PARTICULARLY SUITABLE FOR OUTDOOR USE
- ✓ DOUBLE SAFETY LOCK WITH KEY PROVIDED
- ✓ WALL MOUNTING SYSTEM



NON TOXIC

WITHOUT POISON

READY FOR USE

EASY TO USE



POLYPROPYLENE MONITORING DEVICE WITH TWO ENTRANCES TO DETECT THE PRESENCE OF MICE, RATS AND OTHER HARMFUL RODENTS.

TARGETED PESTS

Mus musculus musculus, Mus musculus domesticus, Rattus rattus, Rattus norvegicus.

WHERE TO USE

- Near:
- gardens and all green areas where the presence of uncultivated grass makes the environment pleasant for rodents;
 - ducts and electrical panels, dishwashers, doors and cracks, lofts, cellars, garages;
 - along the perimeters of rooms and along the rodent's habitual routes, which can be identified by detecting droppings, hair, burrows, greasy traces, footprints;
 - close to walls.

MONITORING PERIOD

All year round, especially in the period between October and April, when there are peaks in infestation intensity due to lower outdoor temperatures.

Jan. Feb. Mar. Apr. May June July Aug. Sep. Oct. Nov. Dec.

TRAP DIMENSION

Length: 230 mm | Width: 190 mm.



ARTICLE CODE

P-03019IN

TYPE OF PACKAGING

CARTON BOX

SALE PIECES

1 pc

PIECES FOR CARTON

6 pcs

BOXES FOR PALLET

-

PRODUCT EAN CODE

8053251600248



ROCK BAIT STATION

BAIT STATION

NON TOXIC

WITHOUT POISON

READY FOR USE

DESIGN GARDEN-FRIENDLY



- ✓ ROBUST ENOUGH TO WITHSTAND THE WEATHER
- ✓ SECURITY LOCK WITH SPECIAL KEY SUPPLIED
- ✓ REMOVABLE INNER TRAY
- ✓ FIXING SYSTEM FOR SOFT OR HARD GROUND



SINGLE-ENTRY POLYPROPYLENE MONITORING DEVICE TO DETECT THE PRESENCE OF MICE, RATS AND OTHER HARMFUL RODENTS.

TARGETED PESTS

Mus musculus musculus, Mus musculus domesticus, Rattus rattus, Rattus norvegicus.

WHERE TO USE

- Near:
- green areas where the presence of uncultivated grass makes the environment agreeable to rodents
 - in warehouses
 - in grocery store backrooms
 - in waste collection areas.

MONITORING PERIOD

All year round, especially in the period between October and April, when there are peaks in infestation intensity due to lower outdoor temperatures.

Jan. Feb. Mar. Apr. May June July Aug. Sep. Oct. Nov. Dec.

TRAP DIMENSIONS

Length: 250 | Width: 200 mm.



ARTICLE CODE

P-03025 IN

TYPE OF PACKAGING

CARTON

SALE PIECES

1 pc

PIECES FOR CARTON

6 pcs

BOXES FOR PALLET

-

PRODUCT EAN CODE

8053251600262



REPELLENT FOR
MOLE

NON TOXIC

INSECTICIDE FREE

SAFE FOR ANIMALS AND THE ENVIROMENT



- ✓ LIQUID FORMULATION
- ✓ DOES NOT HARM VEGETATION
- ✓ SAFE FOR ANIMALS AND THE ENVIRONMENT



AN ENVIRONMENTALLY FRIENDLY PRODUCT WITH SYNERGISTIC PLANT EXTRACTS REINFORCED BY U.B.® MATRIX WHICH CREATES A PHYSICAL BARRIER TO MOLES.

TARGETED PESTS

Mole.

WHERE TO USE

It is ready to use and should be distributed in the areas to be freed including burrows and tunnels created by moles.

MONITORING PERIOD

All year round, especially between February and October.

Jan. Feb. Mar. Apr. May June July Aug. Sep. Oct. Nov. Dec.

INSTRUCTION FOR USE

Ready to use. Distribute in areas to be cleared including burrows and tunnels they create. One litre is sufficient for an application of approximately 20 linear metres or 18/20 holes.



ARTICLE CODE

P-09067IN

TYPE OF PACKAGING

1L BOTTLE

BOTTLE FOR CARTON

6 pcs

CARTON FOR PALLET

84

PRODUCT EAN CODE

8053251600354

REPELLENT

REPELLENT FOR MICE AND RATS



- ✓ LIQUID FORMULATION
- ✓ DOES NOT HARM VEGETATION
- ✓ SAFE FOR ANIMALS AND THE ENVIRONMENT



AN ENVIRONMENTALLY FRIENDLY PRODUCT WITH SYNERGISTIC PLANT EXTRACTS REINFORCED BY U.B® MATRIX WHICH CREATES A PHYSICAL BARRIER TO MICE AND RATS, LEADING TO THEIR REMOVAL.

TARGETED PESTS

Mice and rats.

WHERE TO USE

It is ideal for electrical panels, engine compartments, cellars and should be applied as it is, delimiting the area to be protected.

MONITORING PERIOD

All year round.

Jan. Feb. Mar. Apr. May June July Aug. Sep. Oct. Nov. Dec.

USER GUIDE

Ready-to-use product. Apply as it is, delimiting the area to be protected. One litre of product is sufficient for an application of approximately 20 linear metres.

Its special composition allows longlasting action. For a preventive action, simply distribute the product once every 15/20 days.



ARTICLE CODE

P-09069IN

TYPE OF PACKAGING

1L BOTTLE

BOTTLES FOR CARTON

6 pcs

BOXES FOR PALLET

84

PRODUCT EAN CODE

8053251600378



inVerde FOR YOUR OUTDOOR SPACES

PROTECT YOUR GARDEN AND VEGETABLE GARDEN

Taking care of your home also includes paying proper attention to green spaces such as your garden, vegetable garden, balconies and terraces. Insects and rodents can be dangerous to our health, that of our children and pets.

Many insects such as wasps, hornets and larvae can be dangerous and it is important to avoid the formation of nests and hives. Effective prevention means making outdoor environments safe, while also protecting access to the home.

Intervening in the event of infestations is also possible outdoors, using targeted products designed for outdoor use, for which we have dedicated an entire range of specific solutions with guaranteed effectiveness. Furthermore, all our traps are Animal Welfare sensitive and are designed not to affect other animal species.

CRAWLING AND FLYING INSECTS LINE

REPELLENT LINE



CHROMOTROPICS LINE



TRAP FOR **VESPIDS** MELATRAP

ATTRACTANT FOR **WASPS AND HORNETS**
VESPOKIL

KIT **MELATRAP+VESPOKIL**

BROWN MARMORATED STINK BUG

TRAP CYMATRAP® GARDEN

PHEROMONE DISPENSER+ATTRACTANT FOR
BROWN MARMORATED STINK BUG
CYMATRAP® GARDEN

TRAP FOR **POPILLIA JAPONICA**
MASS®

PHEROMONE DISPENSER+FLOREAL ATTRACTANT FOR
POPILLIA JAPONICA MASS®

COLLECTING BAGS FOR
POPILLIA JAPONICA MASS®

REPELLENT FOR **TIGER MOSQUITO**

REPELLENT FOR **ANT**



NEW

PHEROMONE CHROMOTROPIC TRAPS FOR
FRUIT PLANTS

PHEROMONE CHROMOTROPIC TRAPS FOR
CHERRY

PHEROMONE CHROMOTROPIC TRAPS FOR
OLIVE TREES

PHEROMONE CHROMOTROPIC TRAPS FOR
TOMATO PLANTS

PHEROMONE CHROMOTROPIC TRAPS FOR
GRAPEVINE

PANEL FOR TRAPPING **FLIES, WHITEFLIES**
AND LEAFHOPPERS
GOLDENTRAP®

TRAP FOR
TOMATO PESTS
IDROTRAP

PHEROMONE DISPENSERS FOR
TOMATO LEAFMINER
IDROTRAP

TRAP FOR
POTATO PESTS
YATLORF

PHEROMONE DISPENSER FOR
POTATO PESTS (*A. sordidus*)

PHEROMONE DISPENSER FOR
POTATO PESTS (*A. litigiosus*)

PHEROMONE DISPENSER FOR
POTATO PESTS (*A. brevis*)

TRAP FOR
VESPID
MELATRAP

NON TOXIC

INSECTICIDE FREE

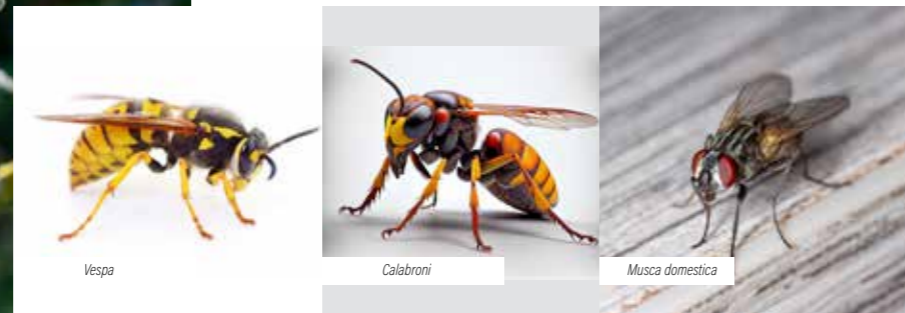
ATTRACTS ONLY TARGETED INSECTS

EASY TO INSPECT



It includes:

- ✓ 1 APPLE-SHAPED TRAP BODY (BASE+COVER) WITH FUNNEL-SHAPED ENTRANCE FOR PESTS TO ENTER
- ✓ 1 METAL HOOK
- ✓ TRANSPARENT LID FOR EASY VISUAL INSPECTION



Vespa

Calabroni

Musca domestica



POLYETHYLENE TRAP FOR DETECTING VESPID WHEN USED IN CONJUNCTION WITH VESPOKIL.

TARGETED PESTS

Musca domestica and vespids.

WHERE TO USE

Terraces, gardens, canopies, orchards.

MONITORING PERIOD

From February to October, depending on the temperature of the season.

Jan. Feb. Mar. Apr. May June July Aug. Sep. Oct. Nov. Dec.

USER GUIDE

Place the trap at at least 1,5 m height, must be protected from the sun and near air flow.

SIZES AND DIMENSIONS

Diameter 180 mm – Height 140 mm.



ARTICLE CODE

P-04025IN

TYPE OF PACKAGING

CARTON BOX

SALE PIECES

1 pc

PIECES PER CARTON

6 pcs

PRODUCT EAN CODE

8053251600279

CAN BE USED WITH:

VESPOKIL

P-01011DIN





ATTRACTANT FOR
WASPS AND HORNETS
VESPOKIL

NON TOXIC

INSECTICIDE FREE

ATTRACTS ONLY TARGETED INSECTS

FOOD ATTRACTANT



✓ ATTRACTS ONLY THE TARGETED INSECTS

✓ INSECTICIDE-FREE



Vespa



Calabroni



Musca domestica



FOOD-BASED LIQUID FOR MONITORING VESPIDI, FOR USE IN APPROPRIATE MONITORING DEVICES.

TARGETED PESTS

Vespidi.

WHERE TO USE

It is suggested for use in Melatrap (P-04025IN). The trap can be placed in the following environments: terraces, gardens, canopies, orchards.

MONITORING PERIOD

From February to October, depending on the temperature of the season.

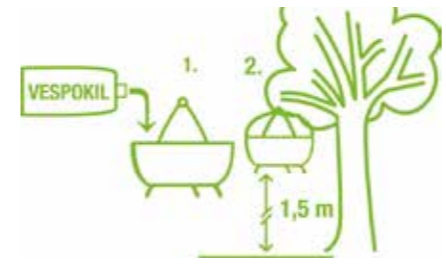
Jan.	Feb.	Mar.	Apr.	May	June	July	Aug.	Sep.	Oct.	Nov.	Dec.
------	------	------	------	-----	------	------	------	------	------	------	------

USER GUIDE

Pour 250 ml Vespokil (half bottle) into the Melatrap and dilute with 250 ml water. Maintain a 1:1 dilution with water.

BOTTLE DIMENSION

500 ml bottle.



ARTICLE CODE	P-01011DIN
TYPE OF PACKAGING	DISPLAY
SALE PIECES	1 pc
BOTTLE FOR DISPLAY	4 pcs 500 ml each
PRODUCT EAN CODE	8053251600231

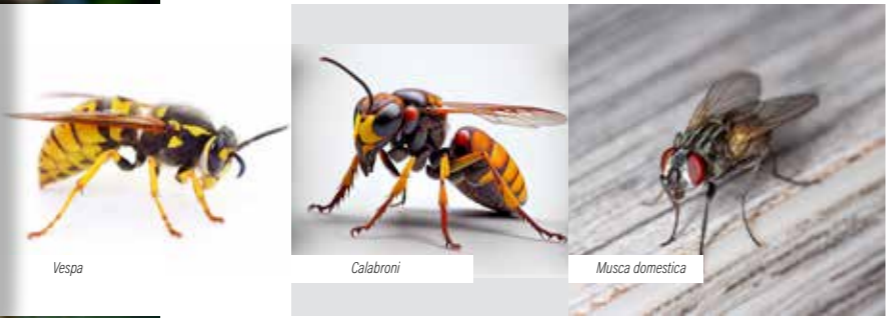
USE WITH:
MELATRAP
P-04025IN



KIT
MELATRAP + VESPOKIL

TRAP FOR WASPS, HORNETS AND MIDGES

- NON TOSSICO
- SENZA INSETTICIDI
- ATTIRA SOLO GLI INSETTI TARGET
- PRONTA ALL'USO



POLYETHYLENE TRAP FOR DETECTING VESPIDES WHEN USED IN CONJUNCTION WITH VESPOKIL.

FOOD-BASED LIQUID FOR MONITORING VESPIDES, FOR USE IN APPROPRIATE MONITORING DEVICES.

TARGETED PESTS

Vespides.

WHERE TO USE

The trap can be placed in the following environments: terraces, gardens, canopies, orchards.

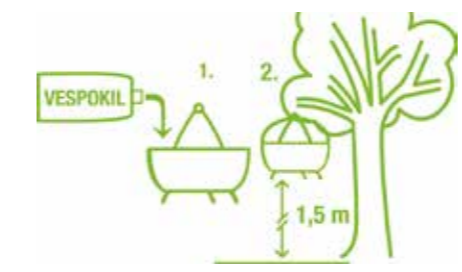
MONITORING PERIOD

From February to October, depending on the temperature of the season.

Jan.	Feb.	Mar.	Apr.	May	June	July	Aug.	Sep.	Oct.	Nov.	Dec.
------	------	------	------	-----	------	------	------	------	------	------	------

USER GUIDE

Pour 250 ml Vespokil (half bottle) into the Melatrap and dilute with 250 ml water. Maintain a 1:1 dilution with water.



ARTICLE CODE

P-04025INKIT

TYPE OF PACKAGING

CARTON BOX

KIT FOR PACKAGING

1 pc

PIECES FOR CARTON

3 pcs

CARTON FOR PALLET

84

PRODUCT EAN CODE

8053251600545

BROWN MARMORATED STINK BUG TRAP

CYMATRAP® GARDEN



NON TOXIC

INSECTICIDE FREE

SAFE FOR ANIMALS AND THE ENVIROMENT

READY TO USE



- ✓ ATTRACTS ONLY TARGETED INSECTS
- ✓ NON TOXIC
- ✓ INSECTICIDE FREE



Halyomorpha halys



PHEROMONE TRAP FOR THE CONTROL AND THE MONITORING OF THE BROWN MARMORATED STINK BUG (*Halyomorpha halys*)
RACCOMENDATO PER USO HOBBY.

TARGETED PESTS

Brown Marmorated Stink Bug (*Halyomorpha halys*)

WHERE TO USE

It is the recommended trap for domestic/ hobby use for vegetable gardens, small orchards and gardens. The particular pyramid shape is designed specifically to effectively capture adults and bedbug nests.

MONITORING PERIOD

All yearlong, especially between March and September

Jan. Feb. Mar. Apr. May June July Aug. Sep. Oct. Nov. Dec.

USER GUIDE

Place Cymatrap® Garden in external environments, gardens, alongside external walls.

TRAP DIMENSIONS

Height 45 cm – Base 16 cm



ARTICLE CODE

P-25012CIN

TYPE OF PAKAGING

CARTON BOX

TRAPS FOR CASE

1 pc

CASES FOR CARTON BOX

6 pcs

PRODUCT EAN CODE

8053251600385

PHEROMONE DISPENSER
+ ATTRACTANT FOR
**BROWN MARMORATED
STINK BUGS**
CYMATRAP® GARDEN



- ✓ ATTRACTS ONLY TARGETED INSECTS
- ✓ NON TOSSICO
- ✓ INSECTICIDE FREE



Halyomorpha halys

NON TOSSICO

SENZA INSETTICIDI

SICURO PER ANIMALI E AMBIENTE



MONITORING KIT CONSISTING OF A PHEROMONE DISPENSER AND AN ATTRACTANT DISPENSER SPECIFICALLY FOR THE ASIAN BED BUG. THIS COMBINATION ENABLES THE CAPTURE OF INDIVIDUALS OF BOTH SEXES IN GARDENS AND ORCHARDS. IT IS NON-TOXIC, CONTAINS NO INSECTICIDES AND IS THEREFORE SAFE FOR BOTH ANIMALS AND THE ENVIRONMENT.

TARGETED PESTS

Brown Marmorated Stink Bug (*Halyomorpha halys*)

WHERE TO USE

Use in domestic environments such as small orchards and vegetable gardens.

MONITORING PERIOD

All yearlong, especially between March and September

Jan. Feb. Mar. Apr. May June July Aug. Sep. Oct. Nov. Dec.

USER GUIDE

Use with Cymatrap® Garden.

USE WITH:

**BROWN MARMORATED STINK
BUG TRAP CYMATRAP®
GARDEN**
P-25012CIN



ARTICLE CODE

P-25012CINKIT

TYPE OF PACKAGING

CARTON BOX

DISPENSER PER PACKAGE

2 pcs (pheromone) +
1 pcs (attractant)

CASES FOR CARTON BOX

12 pcs

CARTONI FOR PALLET

200

PRODUCT EAN CODE

8053251600446

TRAP FOR
POPILLIA JAPONICA
MASS®

NON TOXIC
INSECTICIDE FREE
SAFE FOR ANIMALS AND THE ENVIROMENT



- ✓ ATTRACTS ONLY TARGETED INSECTS
- ✓ NON TOXIC
- ✓ INSECTICIDE FREE



Popillia japonica



PHEROMONE TRAP FOR MONITORING THE JAPANESE BEETLE (*Popillia japonica*), POLYPHAGOUS INSECT AND PEST OF NUMEROUS FRUIT AND ORNAMENTAL CROPS.

TARGETED PESTS

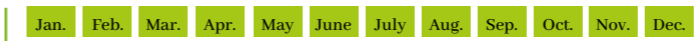
Japanese beetle (*Popillia japonica*).

WHERE TO USE

The presence of the sex pheromone and the floral attractant makes it possible to capture both sexes. The neutral colour makes the trap selective towards the Japanese beetle, avoiding attracting pollinating insects.

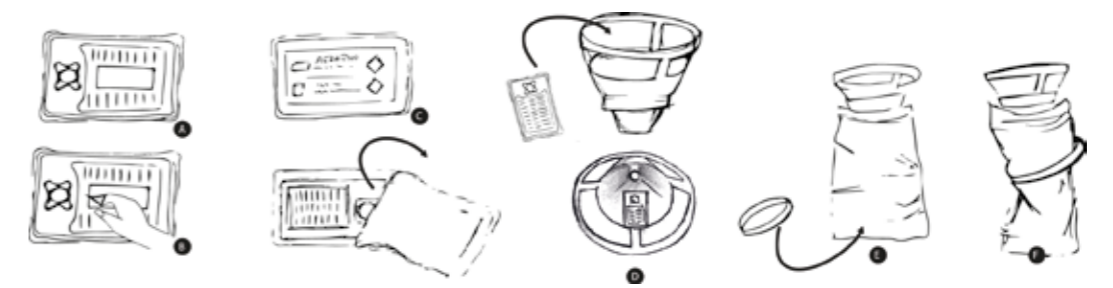
MONITORING PERIOD

All year round, especially in the months between May and August.



USER GUIDE

Place MASS® trap in external environment, gardens and vegetable gardens, at least 1 meter high and 10 meters from the most affected plants.



ARTICLE CODE

P-04215CIN

TYPE OF PACKAGING

CARTON BOX

TRAPS FOR CASE

1 pc

CASES FOR CARTON BOX

4 pcs

PRODUCT EAN CODE

8053251600392

PHEROMONE DISPENSER
 + FLORAL ATTRACTANT FOR
POPILLIA JAPONICA
 MASS®

MONITORING KIT CONSISTING OF A PHEROMONE DISPENSER AND AN ATTRACTANT DISPENSER SPECIFICALLY FOR POPILLIA JAPONICA. THIS COMBINATION ALLOWS THE CAPTURE OF INDIVIDUALS OF BOTH SEXES WHILE AVOIDING TRAPPING OTHER POLLINATING INSECTS. IT IS NON-TOXIC, CONTAINS NO INSECTICIDES AND IS THEREFORE SAFE FOR BOTH ANIMALS AND THE ENVIRONMENT.

TARGETED PESTS

Popillia japonica.

WHERE TO USE

External environments, small gardens, small orchards and vegetable gardens.

MONITORING PERIOD

All yearlong, especially between May and August.

Jan. Feb. Mar. Apr. May June July Aug. Sep. Oct. Nov. Dec.

USER GUIDE

Use with MASS® Trap for Popillia Japonica.

USE WITH:



COLLECTING BAGS FOR
POPILLIA JAPONICA
 MASS®

COLLECTING BAG WITH ZIP FASTENER MADE OF COMPOSTABLE AND BIODEGRADABLE MATERIAL. SIZE 20×30 CM.

TARGETED PESTS

Popillia japonica.

WHERE TO USE

External environments, small gardens, small orchards and vegetable gardens.

MONITORING PERIOD

All yearlong, especially between May and August

Gen. Feb. Mar. Apr. Mag. Giu. Lug. Ago. Set. Ott. Nov. Dic.

USER GUIDE

Use with MASS® Trap for Popillia Japonica.

USE WITH:

TRAP FOR
 POPILLIA JAPONICA MASS®
 P-04215CIN



ARTICLE CODE

P-25012CINKIT

TYPE OF PACKAGING

CARTON

DISPENSER FOR BOX

2 pcs (1 pheromone dispenser + 1 attractant)

CARTON FOR BOX

12 pcs

CARTON FOR PALLET

200

PRODUCT EAN CODE

8053251600446



ARTICLE CODE

P-04125AINRIC

TYPE OF PACKAGING

CARTON BOX

BAGS FOR PACKAGING

10 pcs

CASES FOR BOX

10 pcs

CARTON FOR PALLET

200

PRODUCT EAN CODE

8053251600439

REPELLENT FOR TIGER MOSQUITO



**NO FLYING
INSECTS**

- ✓ WITH PLANT-DERIVED GERANIOL ACTIVE INGREDIENT
- ✓ FOR ENVIRONMENTAL TREATMENTS
- ✓ NO GAS SPRAY
- ✓ PLEASANTLY SCENTED
- ✓ FOR PROFESSIONAL AND NON-PROFESSIONAL USE



THE PRODUCT, IN A READY-TO-USE AQUEOUS SOLUTION CONTAINING GERANIOL, A PLANT-DERIVED ACTIVE INGREDIENT, HAS REPELLENT ACTIVITY AGAINST THE TIGER MOSQUITO.

TARGETED PESTS

Tiger mosquito.

WHERE TO USE

It can be used in the following fields of application:

- Housing areas;
- public places and community venues;
- holiday resorts: hotels, campsites, farmhouses, hostels, etc.
- in productive areas;
- in composting facilities;
- in transport vehicles;
- in port and airport areas, means of transport and railway stations.
- in green areas: such as hedges, gardens, tree-lined avenues for tiger mosquito control.

MONITORING PERIOD

All year round, especially between March and September.

Jan. Feb. Mar. Apr. May June July Aug. Sep. Oct. Nov. Dec.

INSTRUCTION FOR USE

It should be sprayed from a distance of about 30 cm on surfaces such as windowsills, edges, door frames, cracks, outdoor curtains, green areas or in general in places where mosquitoes can settle.



ARTICLE CODE

P-09066IN

TYPE OF PACKAGING

500ml BOTTLE

BOTTLES FOR CARTON

12 pcs

BOXES FOR PALLET

84

PRODUCT EAN CODE

8053251600361

MEDICAL SURGICAL DEVICE

Ministry of Health Registration No. 20633

REPELLENT LINE

NON TOXIC

INSECTICIDE FREE

SAFE FOR ANIMALS AND THE ENVIRONMENT

REPELLENT FOR
ANT



NON TOSSICO

SENZA INSETTICIDI

SICURO PER ANIMALI E AMBIENTE



- ✓ WITH PLANT-DERIVED GERANIOL ACTIVE INGREDIENT
- ✓ FOR ENVIRONMENTAL TREATMENTS
- ✓ NO GAS SPRAY
- ✓ PLEASANTLY SCENTED
- ✓ FOR PROFESSIONAL AND NON-PROFESSIONAL USE



THE PRODUCT, IN A READY-TO-USE AQUEOUS SOLUTION CONTAINING GERANIOL, A PLANT-DERIVED ACTIVE INGREDIENT, HAS REPELLENT ACTIVITY AGAINST ANTS.

TARGETED PESTS

Ant.

WHERE TO USE

It can be used in the following fields of application:

- Housing areas;
- public places and community venues;
- holiday resorts: hotels, campsites, farmhouses, hostels, etc.
- in productive areas;
- in composting facilities;
- in transport vehicles;
- in port and airport areas, means of transport and railway stations.
- in green areas: such as hedges, gardens, tree-lined avenues for tiger mosquito control.

MONITORING PERIOD

All year round.

Jan. Feb. Mar. Apr. May June July Aug. Sep. Oct. Nov. Dec.

USER GUIDE

It should be sprayed from a distance of approximately 30 cm on surfaces such as windowsills, skirting boards, edges, jambs, cracks, under sofas, carpets or generally in places where ants pass.



ARTICLE CODE

P-09068IN

TYPE OF PACKAGING

500ml BOTTLE

BOTTLES FOR CARTON

12 pcs

BOXES FOR PALLET

84

PRODUCT EAN CODE

8053251600347

MEDICAL SURGICAL DEVICE

Ministry of Health Registration No. 20633

REPELLENT LINE

NEW

PHEROMONE CHROMOTROPIC TRAPS FOR FRUIT PLANTS

EASY TO USE

NON TOXIC

INSECTICIDE FREE

SAFE FOR ANIMALS AND THE ENVIRONMENT

PHEROMONE CHROMOTROPIC TRAPS



- ✓ SUITABLE FOR ORGANIC FARMING
- ✓ DOUBLE ATTRACTANT ACTION: CHROMOTROPIC AND PHEROMONIC
- ✓ INTEGRATED CABLE-TIE FOR EASY PLACEMENT



THE CHROMOTROPIC ADHESIVE PHEROMONE TRAP FOR FRUIT PLANTS IS AN EASY TO USE TRAP. THANKS TO THE CHROMOTROPIC ACTION OF THE COLOUR YELLOW AND THE ATTRACTIVE ACTION OF THE SPECIFIC PHEROMONE EMPLOYED, THE TARGETED INSECTS ORIENT THEMSELVES TOWARDS THE DEVICE AND GET CAUGHT UP.

TARGETED PESTS

Pheromone-based glue trap suitable for monitoring Codling moth (*Cydia pomonella*) and the oriental fruit moth or peach moth (*Cydia molesta*).

WHERE TO USE

Used on fruit plants.

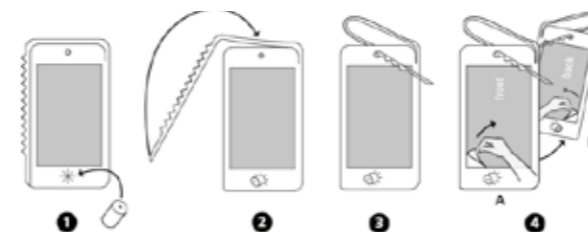
MONITORING PERIOD

All year round, especially between April and July.

Jan. Feb. Mar. Apr. May June July Aug. Sep. Oct. Nov. Dec.

USER GUIDE

Place the pheromone inside the star-shaped hole. Hang the trap on a branch of a fruit plant like: apple, peach, plum, apricot, almond, pear and quince at 1.70 m from the ground, using the knurled strap on the side of the trap by partially removing it and placing it inside the specific hole.



NEW



ARTICLE CODE

P-04268FRDIN

TYPE OF PACKAGING

CARTON

FLOW PACK TRAPS

2 pcs + 2 pheromones

PACKAGING FOR DISPLAY

12 pcs

DISPLAY FOR PALLET

360

PRODUCT EAN CODE

8053251600613

CHROMOTROPICS LINE

NEW

PHEROMONE CHROMOTROPIC TRAPS FOR CHERRY

EASY TO USE

NON TOXIC

INSECTICIDE FREE

SAFE FOR ANIMALS AND THE ENVIROMENT

PHEROMONE CHROMOTROPIC TRAPS



- ✓ SUITABLE FOR ORGANIC FARMING
- ✓ DOUBLE ATTRACTANT ACTION: CHROMOTROPIC AND PHEROMONIC
- ✓ INTEGRATED CABLE-TIE FOR EASY PLACEMENT



Rhagoletis cerasi



THE CHROMOTROPIC ADHESIVE PHEROMONE TRAP FOR CHERRY TREE IS AN EASY TO USE TRAP. THANKS TO THE CHROMOTROPIC ACTION OF THE COLOUR YELLOW AND THE ATTRACTIVE ACTION OF THE SPECIFIC PHEROMONE EMPLOYED, THE TARGETED INSECTS ORIENT THEMSELVES TOWARDS THE DEVICE AND GET CAUGHT UP.

TARGETED PESTS

Pheromone-based glue trap, suitable for cherry fly monitoring (*Rhagoletis cerasi*).

WHERE TO USE

Used on cherry trees.

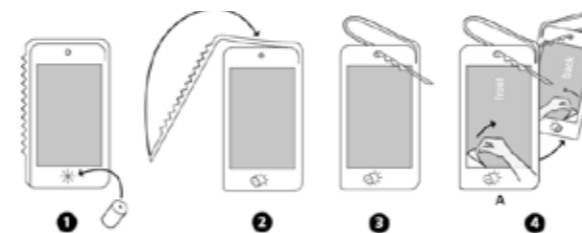
MONITORING PERIOD

All year round, especially between March and June.

Jan. Feb. Mar. Apr. May June July Aug. Sep. Oct. Nov. Dec.

USER GUIDE

Place the pheromone in the star-shaped hole. Hang the trap at 1.70 m from the ground on a cherry tree oriented towards south/south-west, on a branch on the upper part of the foliage. Use the knurled strap on the side of the trap by partially removing it and placing it inside the specific hole. Place one trap per tree.



NEW



ARTICLE CODE

P-04268CILDIN

TYPE OF PACKAGING

CARTON

FLOW PACK TRAPS

2 pcs + 2 pheromones

PAKAGING FOR DISPLAY

12 pcs

DISPLAY FOR PALLET

360

PRODUCT EAN CODE

8053251600637

CHROMOTROPICS LINE

NEW

PHEROMONE CHROMOTROPIC TRAPS FOR OLIVE TREES

EASY TO USE

NON TOXIC

INSECTICIDE FREE

SAFE FOR ANIMALS AND THE ENVIRONMENT

PHEROMONE CHROMOTROPIC TRAPS



- ✓ SUITABLE FOR ORGANIC FARMING
- ✓ DOUBLE ATTRACTANT ACTION: CHROMOTROPIC AND PHEROMONIC
- ✓ INTEGRATED CABLE-TIE FOR EASY PLACEMENT



Bactrocera oleae



Prays oleae



THE CHROMOTROPIC ADHESIVE PHEROMONE TRAP FOR OLIVE TREE IS AN EASY TO USE TRAP. THANKS TO THE CHROMOTROPIC ACTION OF THE COLOUR YELLOW AND THE ATTRACTIVE ACTION OF THE SPECIFIC PHEROMONE EMPLOYED, THE TARGETED INSECTS ORIENT THEMSELVES TOWARDS THE DEVICE AND GET CAUGHT UP.

TARGETED PESTS

Suitable for monitoring olive fly (*Bactrocera oleae*) and olive moth (*Prays oleae*).

WHERE TO USE

Used on olive plants.

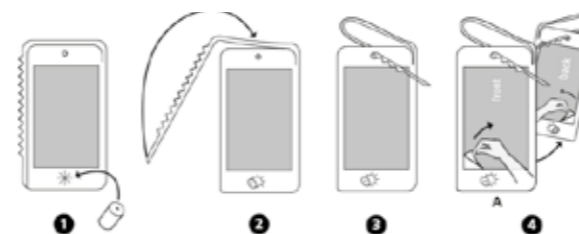
MONITORING PERIOD

All year round, especially between April and November.

Jan. Feb. Mar. Apr. May June July Aug. Sep. Oct. Nov. Dec.

USER GUIDE

Place the pheromone in the star-shaped hole. Hang the trap at 1,70 m from the ground on an olive tree on the upper part of the foliage. Use the knurled strap on the side of the trap by partially removing it and placing it inside the specific hole. Place one trap per tree.



NEW



ARTICLE CODE

P-04268ULDIN

TYPE OF PACKAGING

CARTON

FLOW PACK TRAPS

2 pcs + 2 pheromones

PACKAGING FOR DISPLAY

12 pcs

DISPLAY FOR PALLET

360

PRODUCT EAN CODE

8053251600606

CHROMOTROPICS LINE

NEW

PHEROMONE CHROMOTROPIC TRAPS FOR

TOMATO PLANTS

EASY TO USE

NON TOXIC

INSECTICIDE FREE

SAFE FOR ANIMALS AND THE ENVIROMENT

PHEROMONE CHROMOTROPIC TRAPS



- ✓ SUITABLE FOR ORGANIC FARMING
- ✓ DOUBLE ATTRACTANT ACTION: CHROMOTROPIC AND PHEROMONIC
- ✓ INTEGRATED CABLE-TIE FOR EASY PLACEMENT



Tuta absoluta



THE CHROMOTROPIC ADHESIVE PHEROMONE TRAP FOR TOMATO PLANT IS AN EASY TO USE TRAP. THANKS TO THE CHROMOTROPIC ACTION OF THE COLOUR BLACK AND THE ATTRACTIVE ACTION OF THE SPECIFIC PHEROMONE EMPLOYED, THE TARGETED INSECTS ORIENT THEMSELVES TOWARDS THE DEVICE AND GET CAUGHT UP.

TARGETED PESTS

Suitable for monitoring the tomato moth (*Tuta absoluta*).

WHERE TO USE

Used on tomato plants.

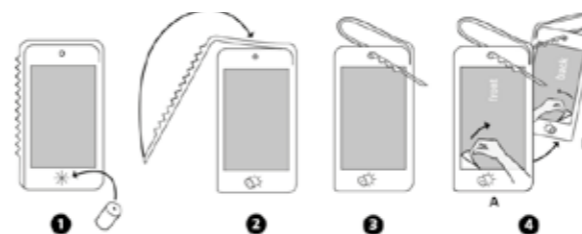
MONITORING PERIOD

All year round.

Jan. Feb. Mar. Apr. May June July Aug. Sep. Oct. Nov. Dec.

USER GUIDE

Place the pheromone inside the star-shaped hole. Hang the trap on a tomato plant at 0,30/1,20 m from the ground. Use the knurled strap on the side of the trap by partially removing it and placing it inside the specific hole. Hang 1 trap every m².



NEW



ARTICLE CODE

P-04268POMDIN

TYPE OF PACKAGING

CARTON

FLOW PACK TRAPS

2 pcs + 2 pheromones

PACKAGING FOR DISPLAY

12 pcs

DISPLAY FOR PALLET

360

PRODUCT EAN CODE

8053251600620

CHROMOTROPICS LINE

NEW

PHEROMONE CHROMOTROPIC TRAPS FOR GRAPEVINE

EASY TO USE

NON TOXIC

INSECTICIDE FREE

SAFE FOR ANIMALS AND THE ENVIROMENT

PHEROMONE CHROMOTROPIC TRAPS



- ✓ SUITABLE FOR ORGANIC FARMING
- ✓ DOUBLE ATTRACTANT ACTION: CHROMOTROPIC AND PHEROMONIC.
- ✓ INTEGRATED CABLE-TIE FOR EASY PLACEMENT.



Eupoecilia ambiguella



Lobesia botrana



THE CHROMOTROPIC ADHESIVE PHEROMONE TRAP FOR GRAPE VINE IS AN EASY TO USE TRAP. THANKS TO THE CHROMOTROPIC ACTION OF THE COLOUR YELLOW AND THE ATTRACTIVE ACTION OF THE SPECIFIC PHEROMONE EMPLOYED, THE TARGETED INSECTS ORIENT THEMSELVES TOWARDS THE DEVICE AND GET CAUGHT UP

TARGETED PESTS

Suitable for monitoring grapevine moths.

WHERE TO USE

Used on grapevine.

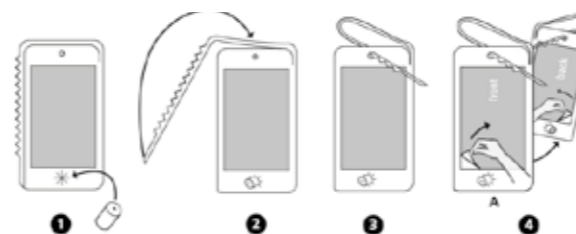
MONITORING PERIOD

All yearlong, especially between April and October.

Gen. Feb. Mar. **Apr.** Mag. Giu. Lug. Ago. Set. Ott. Nov. Dic.

USER GUIDE

Place the pheromone inside the star-shaped hole. Hang the trap away from the foliage, using the knurled strap on the side of the trap by partially removing it and placing it inside the specific hole. Hang one trap per plant.



NEW



ARTICLE CODE

P-04268VITEDIN

TYPE OF PACKAGING

CARTON

FLOW PACK TRAPS

2 pcs + 2 pheromones

PACKAGING FOR DISPLAY

12 pcs

DISPLAY FOR PALLET

360

PRODUCT EAN CODE

8053251600644

CHROMOTROPICS LINE

PANEL FOR TRAPPING
FLIES, WHITEFLIES AND LEAFHOPPERS
 GOLDENTRAP®



ODORLESS

EASY TO USE

READY TO USE

NON TOXIC

INSECTICIDE FREE

SAFE FOR ANIMALS AND THE ENVIROMENT



- ✓ RESISTANT TO BAD WEATHER
- ✓ CHROMOTROPIC ATTRACTIVE ACTION



Scaphoideus titanus - CICALINE



YELLOW ADHESIVE CHROMOTROPIC MONITORING TRAP, USED TO DETECT THE PRESENCE OF INSECTS, ESPECIALLY FOR CATCHING LEAFHOPPERS, FLIES AND MIDGES. EQUIPPED WITH TWO LACES PER PANEL, THE TRAP IS READY FOR USE.

- **TARGETED PESTS**
Flies, whiteflies and leafhoppers
- **WHERE TO USE**
External environments, gardens, orchards and vegetable gardens.
- **MONITORING PERIOD**
All year round, especially between March and October

Jan.	Feb.	Mar.	Apr.	May	June	July	Aug.	Sep.	Oct.	Nov.	Dec.
------	------	------	------	-----	------	------	------	------	------	------	------
- **USER GUIDE**
Remove the two protective films and place the trap on support structures, using the provided ties to secure it firmly.
- **PANEL SIZE**
Height 25,5 cm – Widht 16 cm



ARTICLE CODE	P-25017GDIN
TYPE OF PAKAGING	CARTON BOX
FLOW PACK FOR TRAPS	10 pcs
PACKAGES FOR DISPLAY	10 pcs
DISPLAY FOR PALLET	104
PRODUCT EAN CODE	8053251600460

TRAP FOR
TOMATO PESTS
IDROTRAP

NON TOXIC

INSECTICIDE FREE

SAFE FOR ANIMALS AND THE ENVIROMENT



READY TO USE



✓ ATTRACTS ONLY TARGETED INSECTS

✓ NON TOXIC

✓ INSECTICIDE FREE



Tuta absoluta



PHEROMONE MONITORING TRAP FOR DETECTING TOMATO PESTS (*Tuta absoluta*). IT CONSISTS OF A RED TRAY WITH AN INTEGRATED OVERFLOW SYSTEM THAT CONTROLS THE WATER LEVEL. MALE INSECTS ATTRACTED BY THE SEX PHEROMONE DISPENSED FROM THE TOP OF THE TRAP FALL INTO THE WATER. IT CAN BE CONNECTED TO A DRIP TRAY FOR AUTOMATIC FILLING OR ALTERNATIVELY REFILLING MUST BE DONE MANUALLY.

TARGETED PESTS

Tuta absoluta.

WHERE TO USE

Gardens, Vegetable Garden.

MONITORING PERIOD

All yearlong, especially between May and September.

Jan. Feb. Mar. Apr. **May** June July Aug. Sep. Oct. Nov. Dec.

USER GUIDE

Place IDROTRAP on the ground, maintaining a distance of 15/20 meters between each trap, fill the trap with water to the indicated level, taking care to add a small amount of liquid soap or vegetable oil.



ARTICLE CODE

P-25022CIN

TYPE OF PACKAGING

CARTON BOX

TRAPS FOR CASE

1 pc

CASES FOR DISPLAY

3 pcs

DISPLAY FOR PALLET

30

PRODUCT EAN CODE

8053251600484

PHEROMONE DISPENSERS FOT

TOMATO LEAFMINER

IDROTRAP



PHEROMONE DISPENSER TO BE USED WITH IDROTRAP TO MONITOR TOMATO LEAFMINER (*Tuta Absoluta*).



Tuta absoluta

TARGETED PESTS

(*Tuta Absoluta*)

WHERE TO USE

Gardens, Vegetable Garden.

MONITORING PERIOD

All yearlong, especially between May and September.

- Jan.
- Feb.
- Mar.
- Apr.
- May
- June
- July
- Aug.
- Sep.
- Oct.
- Nov.
- Dec.

USER GUIDE

Use with IDROTRAP

USE WITH:

TRAP FOR TOMATO PESTS
IDROTRAP
P-25022CIN



ARTICLE CODE

P-25022CINKIT

TYPE OF PACKAGING

CARTON

DISPENSER FOR PACKAGE

1 pc

CASES FOR BOX

12

PRODUCT EAN CODE

8053251600491



TRAP FOR
POTATO PESTS
YATLORF

- NON TOSSICO
- SENZA INSETTICIDI
- SICURO PER ANIMALI E AMBIENTE



- ✓ WEATHER-RESISTANT
- ✓ ATTRACTS ONLY TARGETED INSECTS



TRAP DESIGNED FOR MONITORING POTATO PARASITIC BEETLES (ELATERIDAE) WHOSE LARVAE FEED ON ROOTS AND UNDERGROUND ORGANS, CAUSING DECAYING AND WILTING OF ADULT PLANTS. IT IS SUITABLE FOR REGULAR SURVEILLANCE OF ELATERIDAE BEETLES (A. BREVIS; A. LITIGIOSUS; A. SORDIDUS). DEPENDING ON THE SEASON AND THE INSECT TO BE MONITORED, THE YATLORF TRAP SHOULD BE TRIGGERED WITH ONE OR MORE PHEROMONES TO ATTRACT THE TARGET SPECIES.

TARGETED PESTS
Coleotteri, Elateridi.

WHERE TO USE

External environments, gardens, orchards and vegetable gardens.

MONITORING PERIOD

All yearlong, depending on the season and the insect to detect.

- Jan.
- Feb.
- Mar.
- Apr.
- May
- June
- July
- Aug.
- Sep.
- Oct.
- Nov.
- Dec.

USER GUIDE

Place the pheromone in the trap, depending on the insect to monitor, following the recommended calendar. End of March/ Early April: insert Brevis – Early April: add Sordidus – beginning of May: renew Sordidus – Late May: replace Brevis with Litigiosus – Mid-June: Renew Litigiosus – Early August: end of monitoring.



ARTICLE CODE	P-25011AIN
TYPE OF PACKAGING	CARTON BOX
TRAPS FOR CASE	1 pc
CASES FOR DISPLAY	6 pcs
DISPLAY FOR PALLET	12
PRODUCT EAN CODE	8053251600507

PHEROMONE DISPENSER FOR
POTATO PESTS
YATLORF



USE WITH:
TRAP FOR POTATO PESTS
YATLORF
P-25011AIN



Pheromone dispenser to monitor *Agriotes Brevis*, to be inserted inside Yatlorf, the trap to detect and monitor potato pests.



ARTICLE CODE	P-25011ABAINKIT
TYPE OF PACKAGING	CARTON
DISPENSER FOR PACKAGE	1 pc
CASES FOR BOX	12
CARTON FOR PALLET	-
PRODUCT EAN CODE	8053251600514



Pheromone dispenser to monitor *Agriotes Litigiosus*, to be inserted inside Yatlorf, the trap to detect and monitor potato pests.



ARTICLE CODE	P-25011ALAINKIT
TYPE OF PACKAGING	CARTON
DISPENSER FOR PACKAGE	2 pcs
CASES FOR BOX	12
CARTON FOR PALLET	-
PRODUCT EAN CODE	8053251600538





Pheromone dispenser to monitor *Agriotes Sordidus*, to be inserted inside Yatlorf, the trap to detect and monitor the potato pests.




ARTICLE CODE	P-25011ASAINKIT
TYPE OF PACKAGING	CARTON
DISPENSER FOR PACKAGE	2 pc
CASES FOR BOX	12
CARTON FOR PALLET	-
PRODUCT EAN CODE	8053251600521

inVerde

products

CODE	PRODUCT	CATEGORY	LINE
P-04146DIN	TRAP FOR FOOD MOTHS		CRAWLING AND FLYING INSECTS LINE
P-04067DIN	TRAP FOR CLOTHES MOTHS		CRAWLING AND FLYING INSECTS LINE
P-04029DIN	CORNER TRAP FOR COCKROACH		CRAWLING AND FLYING INSECTS LINE
P-04114DIN	TRAP FOR SILVERFISH		CRAWLING AND FLYING INSECTS LINE
P-04179DIN	TRAP FOR BED BUGS		CRAWLING AND FLYING INSECTS LINE
P-04030DIN	CORNER FLY TRAP		CRAWLING AND FLYING INSECTS LINE
P-04057DIN	FLY BLADE FLY TRAP		CRAWLING AND FLYING INSECTS LINE
P-04093DIN	FRUIT FLIES TRAP		CRAWLING AND FLYING INSECTS LINE
P-04254DIN	TRAP FOR PLANT PARASITES		CRAWLING AND FLYING INSECTS LINE
P-02148DIN	ADHESIVE TRAP - QUADROBOX		CRAWLING AND FLYING INSECTS LINE
<hr/>			
P-02031DIN	GLUE TRAP MINI		BOARDS
P-02005DIN	GLUE TRAP MAXI		BOARDS
P-02001DIN	GLUE TRAP STOP		BOARDS
P-14001IN	GLUE TUBE FOR ADHESIVE TRAP		BOARDS
P-03024IN	CORAL		RODENTS
P-03019IN	BETA2		RODENTS
P-03025IN	ROCK BAIT STATION		RODENTS
P-09067IN	REPELLENT FOR MOLE		REPELLENT LINE
P-09069IN	REPELLENT FOR MICE AND RATS		REPELLENT LINE
<hr/>			
P-04025IN	MELATRAP		CRAWLING AND FLYING INSECTS LINE
P-01011DIN	VESPOKIL		CRAWLING AND FLYING INSECTS LINE
P-25012CIN	CYMATRAP® GARDEN		CRAWLING AND FLYING INSECTS LINE

CODE	PRODUCT	CATEGORY	LINE
P-25012CIN	PHEROMONE DISPENSER AND ATTRACTANT		CRAWLING AND FLYING INSECTS LINE
P-04215CIN	MASS® TRAP FOR POPILLIA JAPONICA		CRAWLING AND FLYING INSECTS LINE
P-04125CIN	PHEROMONE DISPENSER AND ATTRACTANT		CRAWLING AND FLYING INSECTS LINE
P-04125AIN	COLLECTING BAGS		CRAWLING AND FLYING INSECTS LINE
P-09066IN	REPELLENT FOR TIGER MOSQUITO		REPELLENT LINE
P-09068IN	REPELLENT FOR ANT		REPELLENT LINE
P-04268FRDIN	PHEROMONE CHROMOTROPIC TRAPS FOR FRUIT PLANTS		CHROMOTROPICS LINE
P-04268CILDIN	PHEROMONE CHROMOTROPIC TRAPS FOR CHERRY		CHROMOTROPICS LINE
P-04268ULDIN	PHEROMONE CHROMOTROPIC TRAPS FOR OLIVE TREES		CHROMOTROPICS LINE
P-04268POMDIN	PHEROMONE CHROMOTROPIC TRAPS FOR TOMATO PLANTS		CHROMOTROPICS LINE
P-04268VITEDIN	PHEROMONE CHROMOTROPIC TRAPS FOR GRAPE VINE	CHROMOTROPICS LINE	
P-25017GDIN	PANEL FOR TRAPPING FLIES, WHITEFLIES AND LEAFHOPPERS - GOLDENTRAP®	CHROMOTROPICS LINE	
P-25022CIN	TRAP FOR TOMATO PESTS IDROTRAP	CRAWLING AND FLYING INSECTS LINE	
P-25022CINKIT	PHEROMONE DISPENSERS FOR TOMATO LEAFMINER - IDROTRAP	CRAWLING AND FLYING INSECTS LINE	
P-25011AIN	TRAP FOR POTATO PESTS - YATLORF	CRAWLING AND FLYING INSECTS LINE	
P-25011ABAINKIT	PHEROMONE DISPENSERS FOR POTATO PESTS <i>A.brevis</i>	CRAWLING AND FLYING INSECTS LINE	
P-25011ALAINKIT	PHEROMONE DISPENSERS FOR POTATO PESTS <i>A.litigiosus</i>	CRAWLING AND FLYING INSECTS LINE	
P-25011ASAINKIT	PHEROMONE DISPENSERS FOR POTATO PESTS <i>A.sordidus</i>	CRAWLING AND FLYING INSECTS LINE	

inVerde

Team

EXPORT KEY

ACCOUNT CONSUMER

STEFANO FAVARI

+39 346 0853280

stefano.favari@geaitaly.it

SALES

FABRIZIO PIROVANO

+39 342 552 4026

fabrizio.pirovano@geaitaly.it

CUSTOMER CARE

NOEMI KERSTENS

+39 02 335 148 90

noemi.kerstens@geaitaly.it

QUALITY AND REGULATORY

NADIA ZINI

nzini@geaitaly.it

VITTORIA ANDREASI

vittoria.andreasi@geaitaly.it

MARKETING

VALENTINA ANTONIAZZI

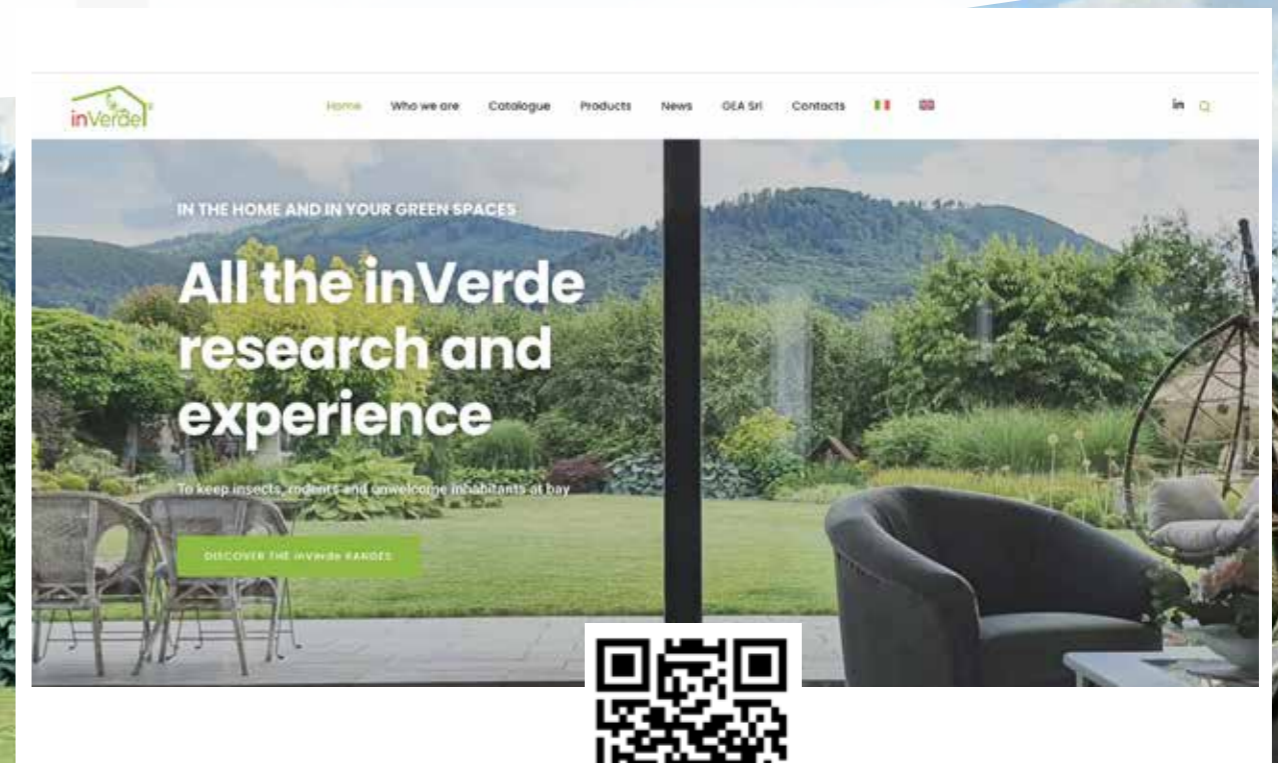
+39 360 106 3720

valentina.antoniazzi@geaitaly.it

FOR ANY QUESTION WRITE TO

inverde@geaitaly.it

Visit our site
<https://inverde.online/en/>







Legal Address & Production Site:

Via A.B. Sabin 31 - 20019 Settimo Milanese (MI)

Logistics & Commercial Offices:

Via A.B. Sabin 17/19 - 20019 Settimo Milanese (MI)

