

TECHNICAL DATA SHEET

1. TRADE NAME: **FRUIT FLY LANTERN INVERDE**

Fruit Fly Lantern is a monitoring device for *Drosophila* spp. (fruit and vineyard flies).

Monitoring device for the IPM application complying with UNI EN 16636:2015 Regulation, that must be applied to control regularly the pests presence in a specific place for a defined time.

2. PRODUCT CODE: **P-04093DIN**

3. PICTURE:



4. TECHNICAL SPECIFICATIONS:

Fruit Fly Lantern inVerde is a monitoring device developed for *Drosophila* spp. (fruit and vineyard flies). It is composed of a folded glue trap in which a flask filled with attractive liquid for *Drosophila* spp. is placed. The double action system of Fruit Fly Lantern inVerde allows fruit and vineyard flies to be trapped both inside the flask (thanks to the attractive action of the liquid food bait) and on the adhesive surface of the trap, the outer box also contributes to attract the flies to the device, thanks to the chromotropic action of the red colour.

It is composed of:

- Trap (to be folded) with hot melt glue adhesive surface;
- White silicon release paper;
- Plastic flask containing the attractive liquid with rubber cap and plastic funnel (to be placed upside down once removed the cap);
- Cardboard skilnet and display.

Trap size (open):

- Length: 396,5 mm
- Height: 75 mm

Trap size (assembled):

- Length: 75 mm
- Width: 75 mm
- Height: 110 mm

Glue Area: 300 x 63 mm

Quantity of glue on the trap surface: 1,89 ± 0,5 g

Colour: As in the picture

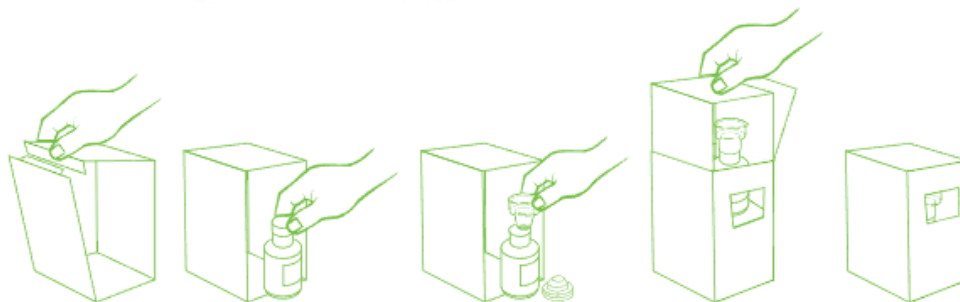
TECHNICAL DATA SHEET

5. HOW TO USE:

Place Fruit Fly Lantern inVerde indoor, in proximity of places where fruit/vineyard flies are present, for example: fruit baskets, vineyard bottles, wine/beer dispenser, etc.

Instruction for use:

- Open the box and extract its content: adhesive trap and flask with attractive liquid;
- Open the adhesive trap and remove the silicon release paper;
- Assemble the adhesive trap by folding it along the dotted lines;
- Remove the screw cap from the flask and place it on the glue area indicated with a circle;
- Place everything back in the box, close it and remove the sides, ripping along the dotted lines.



Suggested monitoring period: all the yearlong, especially between April and October, period in which it is possible to register an increase of this typology of pest infestation.

Suggested frequency of the controls: weekly. Change the trap after two months (at the latest) or when it is full of insects.

Storage conditions: in a cool and dry room, temperature below 25°C and R.H. below 55%.
If well stored (intact packaging), the product shelf life is 3 years.

6. PACKAGING AND SPARE PARTS:

- Display composed of 6 skillets for 1 piece.

7. DISPOSAL CONSIDERATIONS:

Waste disposal should be in accordance with existing Community, National and local regulations.